

Product Description:

- Compact body, to meet the needs of electronics, photovoltaic, semiconductor and other industries for compact space.
- It can detect various transparent bottles and various transparent films stably.



Vitreous body detect polarized retro-reflective



Product features:

- One click detection distance setting, precise and fast setting
- Φ3 mounting hole, built-in metal parts, strong, long life
- Switching between brightness and darkness.
- The principle of coaxial optics, No blind spots

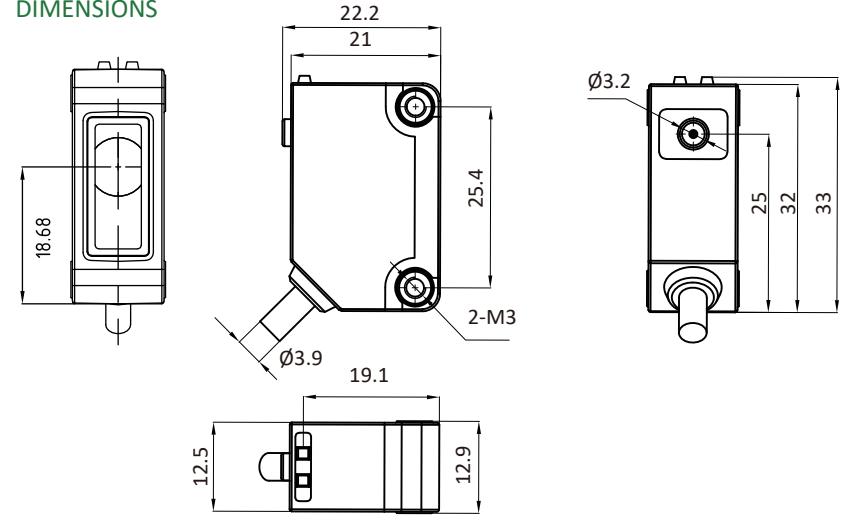
Type	Distance	light source	Switching frequency	Output	Connection	Wiring
OS10U-TRPCN6 *M ¹⁾	2m	Blue light (460nm)	1000Hz	NPN	Cable	Fig.1
OS10U-TRPCP6 *M ¹⁾	2m	Blue light (460nm)	1000Hz	PNP	Cable	Fig.2

Note 1): * M refers to the cable length in meters. If there is no * M in the model, the default cable length is 2 meters.

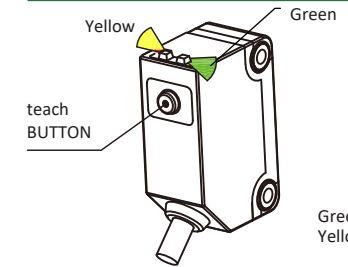
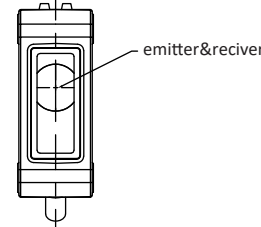
TECHNICAL SPECIFICATION

OPERATING VOLTAGE	10...30 V DC	AMBIENT TEMPERATURE OPERATION	-25°C ... +55°C
LIGHT SOURCE TYPE	Blue light (460nm)	AMBIENT TEMPERATURE STORAGE	-30°C ... +70°C
SWITCHING MODE	Light and dark on can be switched	CIRCUIT PROTECTION	Short-circuit protection, reverse polarity protection, over-load protection
DISTANCE CONTROL	Key teaching	PROTECTION DEGREE	IP67
LOAD CURRENT	≤200mA	HOUSING MATERIAL	PBT+PC
SPOT SIZE	≤60mm@2m	CONNECTING TYPE	*m PVC cable

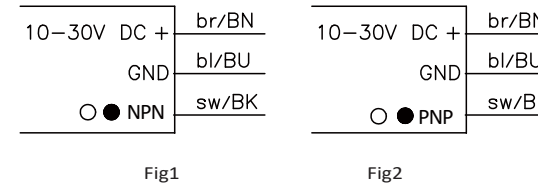
DIMENSIONS



INDICATORS/OPERATING MEANS



ELECTRICAL CONNECTION



OS10U SERIES PRODUCT INSTRUCTIONS:

1. Distance setting: When the product is facing the reflector, press and hold the button for more than 2 seconds and less than 5 seconds. The yellow and green lights will flash synchronously, and the distance setting will be successful when lifted; The yellow and green lights flash alternately, Setting failed.
2. Setting of brightness and darkness: Press and hold the button for more than 5 seconds and less than 10 seconds, the yellow and green indicator lights will flash simultaneously, and the status switch is complete.
3. The surface of the window must be clean and free of dirt, otherwise it will affect the performance of the product.
4. It is recommended that the installation angle of the product be within ± 15 °

产品说明:

- 小巧机身, 满足电子、光伏、半导体等行业对紧凑空间的需求
- 可稳定检测各种透明瓶和各种透明膜



透明体偏振镜反射



产品特点:

- 检测距离一键设定, 设定精准, 快捷
- $\Phi 3$ 安装孔, 内置金属件, 坚固、长寿命
- 亮暗通可切换
- 同轴光学原理, 无盲区

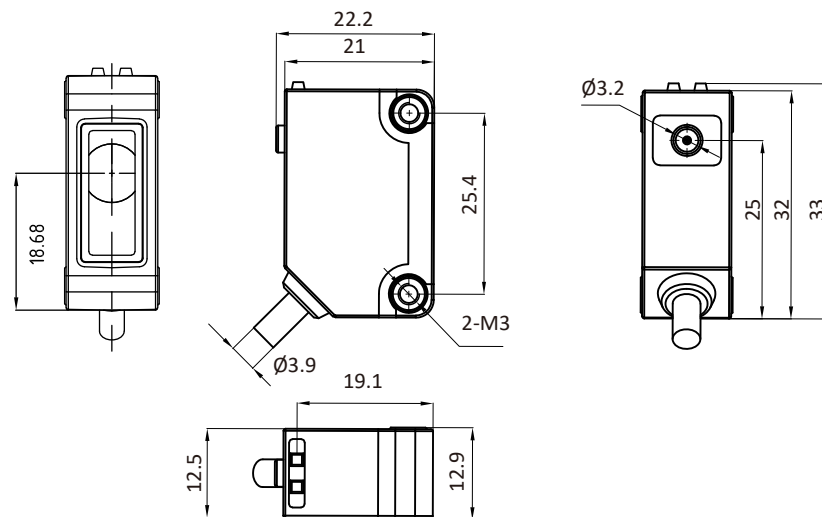
型号	检测距离	光源	开关频率	输出方式	连接方式	接线图
OS10U-TRPCN6 *M ¹⁾	2m	蓝光 (460nm)	1000Hz	NPN	线缆	图1
OS10U-TRPCP6 *M ¹⁾	2m	蓝光 (460nm)	1000Hz	PNP	线缆	图2

注1): *M表示线缆长度, 单位米, 型号中无*M默认线缆长度为2米。

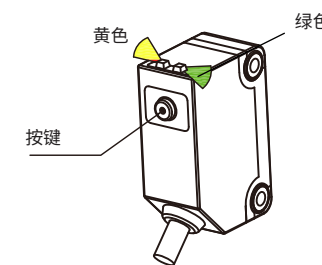
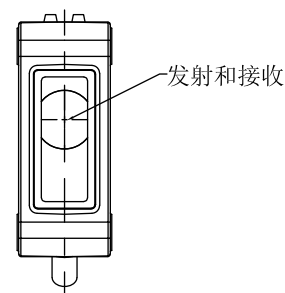
技术参数

工作电压	10...30 V DC	工作温度	-25°C ... +55°C
光源类型	蓝光 (460nm)	环境温度	-30°C ... +70°C
开关模式	亮暗通可切换	保护电路	短路保护、反极性保护、输出负载保护
距离调节	按键示教	防护等级	IP67
负载电流	≤200mA	外壳	PBT+PC
光斑尺寸	≤60mm@2m	连接方式	*M PVC线缆

外形尺寸



操作指示

绿色: 电源指示灯
黄色: 输出指示灯

接线图

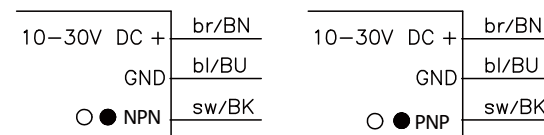


图1

图2

○ = 亮通
● = 暗通

OS10U系列产品使用说明

1. 距离设置: 产品对着反光板, 长按按键2秒以上, 5秒以下, 黄灯绿灯同步闪烁, 抬起距离设定成功; 黄灯绿灯交替闪烁, 设置失败。
2. 亮暗通设置: 长按按键5s以上, 10秒以下, 黄色指示灯和绿色指示灯同时闪烁, 状态切换完成。
3. 视窗表面不可有脏污, 需清洁干净, 否则影响产品性能。
4. 建议产品安装角度在 $\pm 15^\circ$ 以内