

Slim67 I/O Module

----EtherCAT System Manual



Table of contents

1. Product overview	2
1.1 Introduction	2
1.2 Applications	2
1.3 Features	2
1.4 Product type list	2
2. Technical characteristics	3
2.1 Hardware parameters	3
2.2 LED Indication	6
2.3 General system layout	7
3. Installing	8
3.1 Mounting dimensions	8
3.2 Mounting position, mounting dimensions	9
3.3 Wiring Compact67_Slim	9
3.3.1 Connecting Compact67_Slim to protective earth (PE)	9
3.3.2 Compact67_Slim power supply	9
3.3.3 Compact67_Slim BUS connect	10
3.3.4 Compact67_Slim digital signal connect	11
4. Configuration Commissioning	12
4.1 Installation of configuration files	12
4.2 Signal address assignment	12
4.3 Module Startup Process	15
4.4 Module configuration example (Beckhoff)	16
4.5 Module configuration example (Omron)	18

1. Product overview

1.1 Introduction

The distributed I/O devices Compact67_Slim is an EtherCAT I/O device with IP67 protection level.

1.2 Applications

Compact67_Slim distributed I/O device provides a reliable solution for the field bus I/O system which connects controllers and is applied in harsh field environment.

Compact 67_Slim module based on 32mm wide IP67 housing with standardized installation allows a safe and reliable operation in the harsh working environment where water, dust and vibration may occur. These characteristics make them suitable for many applications, such as material conveying system, automatic assembly system and so on.

Other functions include supporting input and output of multiple signals. Embedded high-brightness LED diagnosis helps maintainers to judge I/O, module and network status more easily.

1.3 Features

- Up to IP67 protection level
- Can be used in compact, narrow installation space
- M8 size power supply and network interface
- Independent bus slave station, which can be directly connected with PLC
- LED status display, channel level protection and diagnosis

1.4 Product type list

No.	Type	Description
1	FEEC-0800P-M8	8 PNP Input or Passive Contact Short Circuit Protection and Diagnosis
2	FEEC-0404P-M8	4-Point PNP Input or Passive Contact 4-Point active output Short Circuit Protection and Diagnosis
3	FEEC-08UP-M8	8 PNP input or output, configurable Short Circuit Protection and Diagnosis

2. Technical characteristics

2.1 Hardware parameters

FEEC-08UN-M8

ARTICLE PROPERTIES

PRODUCT TYPE	Compact67 slim IP67 I/O module	OPERATING MODES	Auto-negotiation, Auto-MDI/MDI-X
DESCRIPTION	8 inputs / outputs, NPN, 8xM8	TRANSFER RATE	10 / 100 Mbps
PROTOCOL	EtherCAT	ADDRESS SETTINGS	Automatic assigned

ELECTRICAL DATA

SUPPLY VOLTAGE AND CURRENT	24 V DC, 18 ... 30 V DC, max. 150 mA	INPUT CHANNELS	Max. 8
SYSTEM&INPUT SUPPLY	U _i , max. 4 A	INPUT SUPPLY CURRENT	100 mA per channel
OUTPUT SUPPLY	U _o , max. 4 A	INPUT TYPE	NPN sensors, mechanical switches, dry contacts, etc.
VOLTAGE SUPPLY	2 x M8 4 pin, male + female	INPUT DELAY	2.5 ms
FIELDBUS	2 x M8 4 pin, female	OUTPUT CHANNELS	Max. 8
SIGNALS	8 x M8 3 pin, female	OUTPUT CURRENT PER CHANNEL	Max. 0.5 A
DIAGNOSTIC STATE	Communication indicate, voltage detection, short-circuit & overload monitor	OUTPUT TYPE	Lamps, solenoidvalve, etc.
COMMUNICATION INDICATOR	Green LED	OUTPUT FREQUENCY	Resistive load 100 Hz, Inductive load 5 Hz
POWER INDICATOR	Green LED	PROCESS DATA IN	2 bytes
IO STATUS INDICATOR	Green LED	PROCESS DATA OUT	1 bytes

FUNCTIONAL SAFETY

MTTF (40 °C)	74a
---------------------	-----

GENERAL DATA

PROTECTION CLASS	IP67	OPERATING TEMPERATURE	-25 ... +70 °C
WEIGHT	175.9 g	STORAGE TEMPERATURE	-40 ... +85 °C
DIMENSIONS	32 x 155 x 32 mm		

APPROVALS



FEEC-08UP-M8

ARTICLE PROPERTIES

PRODUCT TYPE	Compact67 slim IP67 I/O module	OPERATING MODES	Auto-negotiation, Auto-MDI/MDI-X
DESCRIPTION	8 inputs / outputs, NPN, 8xM8	TRANSFER RATE	10 / 100 Mbps
PROTOCOL	EtherCAT	ADDRESS SETTINGS	Automatic assigned

ELECTRICAL DATA

SUPPLY VOLTAGE AND CURRENT	24 V DC, 18 ... 30 V DC, max. 150 mA	INPUT CHANNELS	Max. 8
SYSTEM&INPUT SUPPLY	Ui, max. 4 A	INPUT SUPPLY CURRENT	100 mA per channel
OUTPUT SUPPLY	Uo, max. 4 A	INPUT TYPE	PNP sensors, mechanical switches, dry contacts, etc.
VOLTAGE SUPPLY	2 x M8 4 pin, male + female	INPUT DELAY	2.5 ms
FIELDBUS	2 x M8 4 pin, female	OUTPUT CHANNELS	Max. 8
SIGNALS	8 x M8 3 pin, female	OUTPUT CURRENT PER CHANNEL	Max. 0.5 A
DIAGNOSTIC STATE	Communication indicate, voltage detection, short-circuit & overload monitor	OUTPUT TYPE	Lamps, solenoidvalve, etc.
COMMUNICATION INDICATOR	Green LED	OUTPUT FREQUENCY	Resistive load 100 Hz, Inductive load 5 Hz
POWER INDICATOR	Green LED	PROCESS DATA IN	2 bytes
IO STATUS INDICATOR	Green LED	PROCESS DATA OUT	1 bytes

FUNCTIONAL SAFETY

MTTF (40 °C)	75a
---------------------	-----

GENERAL DATA

PROTECTION CLASS	IP67	OPERATING TEMPERATURE	-25 ... +70 °C
WEIGHT	175.9 g	STORAGE TEMPERATURE	-40 ... +85 °C
DIMENSIONS	32 x 155 x 32 mm		

APPROVALS



FEEC-0800P-M8

ARTICLE PROPERTIES

PRODUCT TYPE	Compact67 slim IP67 I/O module	OPERATING MODES	Auto-negotiation, Auto-MDI/MDI-X
DESCRIPTION	8 inputs, PNP, 8xM8	TRANSFER RATE	10 / 100 Mbps
PROTOCOL	EtherCAT	ADDRESS SETTINGS	Automatic assigned

ELECTRICAL DATA

SUPPLY VOLTAGE AND CURRENT	24 V DC, 18 ... 30 V DC, max. 150 mA	INPUT CHANNELS	8
SYSTEM&INPUT SUPPLY	U _i , max. 4 A	INPUT SUPPLY CURRENT	100 mA per channel
OUTPUT SUPPLY	U _o , max. 4 A	INPUT TYPE	PNP sensors, mechanical switches, dry contacts, etc.
VOLTAGE SUPPLY	2 x M8 4 pin, male + female	INPUT DELAY	2.5 ms
FIELDBUS	2 x M8 4 pin, female	OUTPUT CHANNELS	-
SIGNALS	8 x M8 3 pin, female	OUTPUT CURRENT PER CHANNEL	Max. 0.5 A
DIAGNOSTIC STATE	Communication indicate, voltage detection, short-circuit & overload monitor	OUTPUT TYPE	Lamps, solenoidvalve, etc.
COMMUNICATION INDICATOR	Green LED	OUTPUT FREQUENCY	Resistive load 100 Hz, Inductive load 5 Hz
POWER INDICATOR	Green LED	PROCESS DATA IN	2 bytes
IO STATUS INDICATOR	Green LED	PROCESS DATA OUT	0 bytes

FUNCTIONAL SAFETY

MTTF (40 °C)	110a
---------------------	------

GENERAL DATA

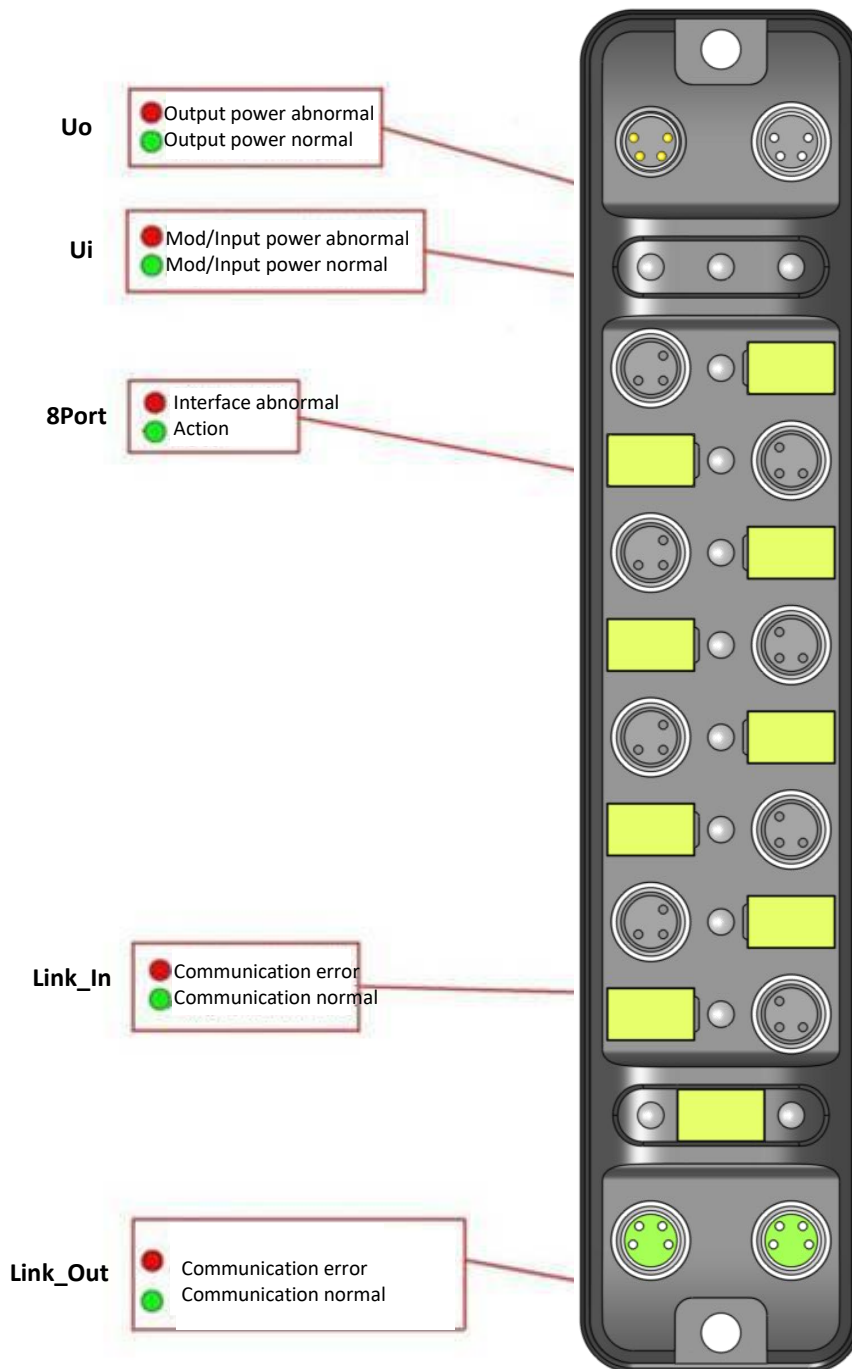
PROTECTION CLASS	IP67	OPERATING TEMPERATURE	-25 ... +70 °C
WEIGHT	175.9 g	STORAGE TEMPERATURE	-40 ... +85 °C
DIMENSIONS	32 x 155 x 32 mm		

APPROVALS



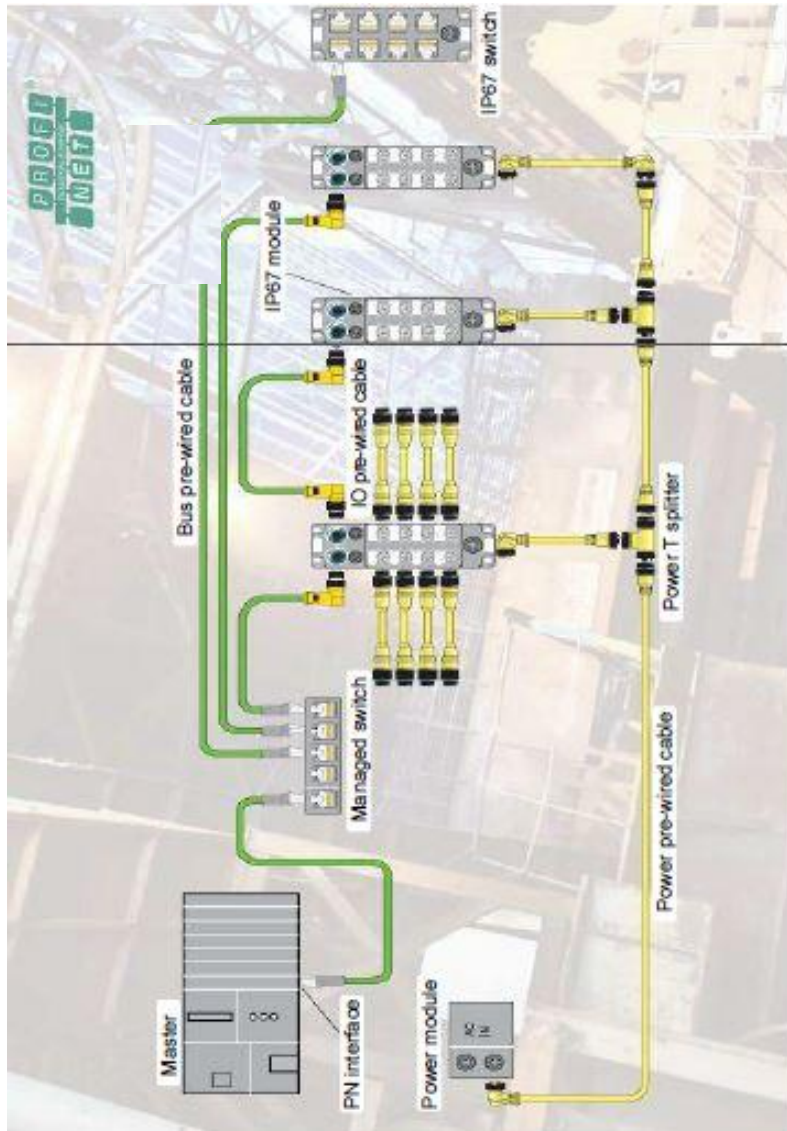
2.2 LED Indication

The operating status of the module can be clearly displayed by the LED indicator.



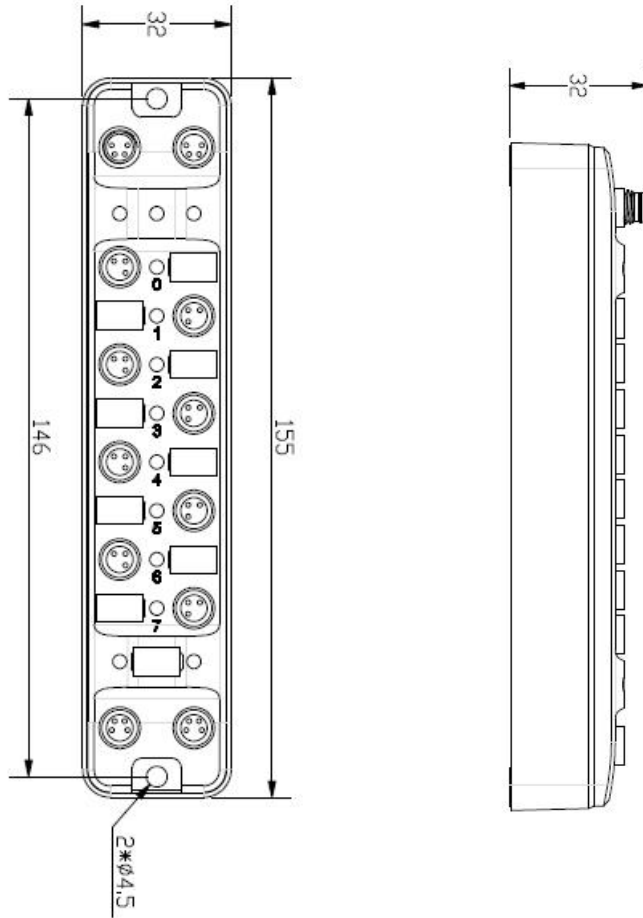
2.3 General system layout

The following figure shows an example of a conventional EtherCAT system module connection, which is powered by 24VDC power supply to three modules. EtherCAT network connects modules through switches or cascades. The further modules can also use more switches to expand the connection distance.



3. Installing

3.1 Mounting dimensions



3.2 Mounting position, mounting dimensions

Compact67_Slim can be mounted in any position because of IP67's high protection level and excellent anti-vibration and anti-interference capability.

Compact67_Slim module adopts a uniform shape size. The following table shows the dimensions of the module:

	Dimensions
Mounting width	32 mm
Mounting height	155 mm
Mounting depth	32 mm (without connector)

3.3 Wiring Compact67_Slim

Please connect according to the basic electrical specifications. For personal and equipment safety, we recommend disconnecting the power supply during wiring operation.

3.3.1 Connecting Compact67_Slim to protective earth (PE)

- Always connect the Compact67_Slim to protective earth.
- The module also requires this connection to protective earth in order to discharge any interference currents to ground, and for EMC compatibility.
- Always make sure you have a low-impedance connection to protective earth.

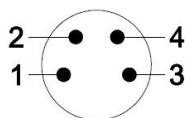
3.3.2 Compact67_Slim power supply

Compact67_Slim modules adopt 24VDC power supply, voltage range 18~30VDC, standard M8-4pin connector.

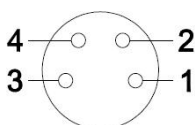
Two parts for power supply: module and input signal power supply Ui (1L+、1M), output signal power supply (2L+、2M).

Electrical isolation between 1L+ and 2L+, internally connected between common point 1M and 2M. (FEEC-0404P-M8 complete isolation of common points)

1) Power in connector view (Male)



2) Power out connector view (Female)



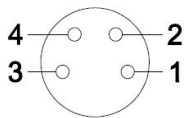
3) Power definition

Terminal	Function	Power supply
1	Module and input signal 1L+	24V
2	Output signal 2L+	24V
3	Module and input signal 1M	0V
4	Output signal 2M	0V

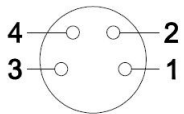
3.3.3 Compact67_Slim BUS connect

Compact67_Slim module, supporting EtherCAT protocol, transmits signals by a shielded cable, M8-4pin connector.

1) BUS-In connector view (Female)



2) BUS-Out connector view (Female)



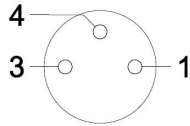
3) Bus definition

Terminal	Function	Cable color
1	Transmit Data(TD+)	Yellow
2	Receive Data(RD+)	White
3	Receive Data(RD-)	Blue
4	Transmit Data(TD-)	Orange

3.3.4 Compact67_Slim digital signal connect

I/O signals of Compact67_Slim module are connected by standard M8-3pin connectors, and each port can connect up to one signal (input or output).

1) Signal connector view (Female)

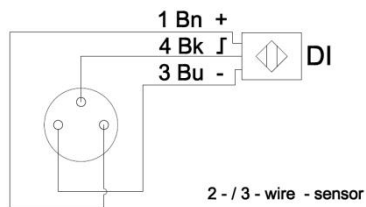


2) Digital signal interface definition

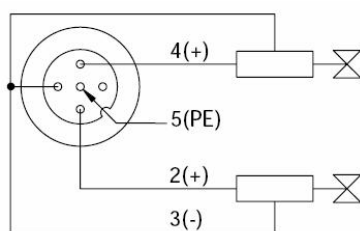
Terminal	M12 connector	
1	Power supply 24V+	
3	Power supply GND	
4	Signal in/out A	1 st signal

3) Digital signal interface definition

a) Input signal – 1 connector connects 1 digital input, FEEC-0800P-M8, FEEC-0404P-M8, FEEC-08UP-M8 support this connection.



b) Output signal – 1 connector connects 1 digital output, FEEC-0404P-M8, FEEC-08UP-M8 support this connection.



4. Configuration Commissioning

4.1 Installation of configuration files

Configuration of Compact67_Slim distributed I/O device via ESI file (XML format) and the standard EtherCAT IO ESI file for the Compact67_Slim will be integrated into user's system. You can visit the ELCO website to get the latest GSD file or call the hotline to contact technical personnel.

How to integrate the ESI file into the system depends on the user's configuration software:

1. Beckhoff system

Take Beckhoff TwinCAT programming software used in EtherCAT system as an example, add ESI files according to the following steps:

Install TwinCAT, then copy the XML file of Compact67_Slim to the following installation directory, for example:

TwinCAT2-----C:\TwinCAT\Io\EtherCAT\

TwinCAT3-----C:\TwinCAT\3.1\Config\Io\EtherCAT\

2. Omron system

Take Omron Sysmac Studio software used in EtherCAT system as an example, add ESI files according to the following steps:

Install TwinCAT, then copy the XML file of Compact67_Slim to the following installation directory, for example:

C:\OMRON\Sysmac Studio\IODeviceProfiles\EsiFiles\UserEsiFiles

4.2 Signal address assignment

Each signal module with M8 interface has 8 connectors (P0~P7) for signal transmission; each connector has 3 pins (Pin1, Pin3, Pin4).

The following table indicates the matchup between signal status and bytes transmitted of EtherCAT.

1) 8 digital inputs module: FEEC-0800P-M8

Byte	Bit	Channel	e.g
Input Byte 0	Bit 0	Con0.Pin4	I 0.0
	Bit 1	Con1.Pin4	I 0.1
	Bit 2	Con2.Pin4	I 0.2
	Bit 3	Con3.Pin4	I 0.3
	Bit 4	Con4.Pin4	I 0.4
	Bit 5	Con5.Pin4	I 0.5
	Bit 6	Con6.Pin4	I 0.6
	Bit 7	Con7.Pin4	I 0.7
Input Byte 1	Bit 0	Con0.Err	I 1.0
	Bit 1	Con1.Err	I 1.1

Input Byte 1	Bit 2	Con2.Err	I 1.2
	Bit 3	Con3.Err	I 1.3
	Bit 4	Con4.Err	I 1.4
	Bit 5	Con5.Err	I 1.5
	Bit 6	Con6.Err	I 1.6
	Bit 7	Con7.Err	I 1.7

2) 4 digital input & 4 digital output module: FEEC-0404P-M8

Byte	Bit	Channel	e.g
Input/Output Byte 0	Bit 0	Con0.Pin4	I 0.0
	Bit 1	Con1.Pin4	I 0.1
	Bit 2	Con2.Pin4	I 0.2
	Bit 3	Con3.Pin4	I 0.3
	Bit 4	Con4.Pin4	Q 0.4
	Bit 5	Con5.Pin4	Q 0.5
	Bit 6	Con6.Pin4	Q 0.6
	Bit 7	Con7.Pin4	Q 0.7
Input Byte 1	Bit 0	Con0.Err	I 1.0
	Bit 1	Con1.Err	I 1.1
	Bit 2	Con2.Err	I 1.2
	Bit 3	Con3.Err	I 1.3
	Bit 4	Con4.Err	I 1.4
	Bit 5	Con5.Err	I 1.5
	Bit 6	Con6.Err	I 1.6
	Bit 7	Con7.Err	I 1.7

3) 8 digital input/output configurable module: FEEC-08UP-M8

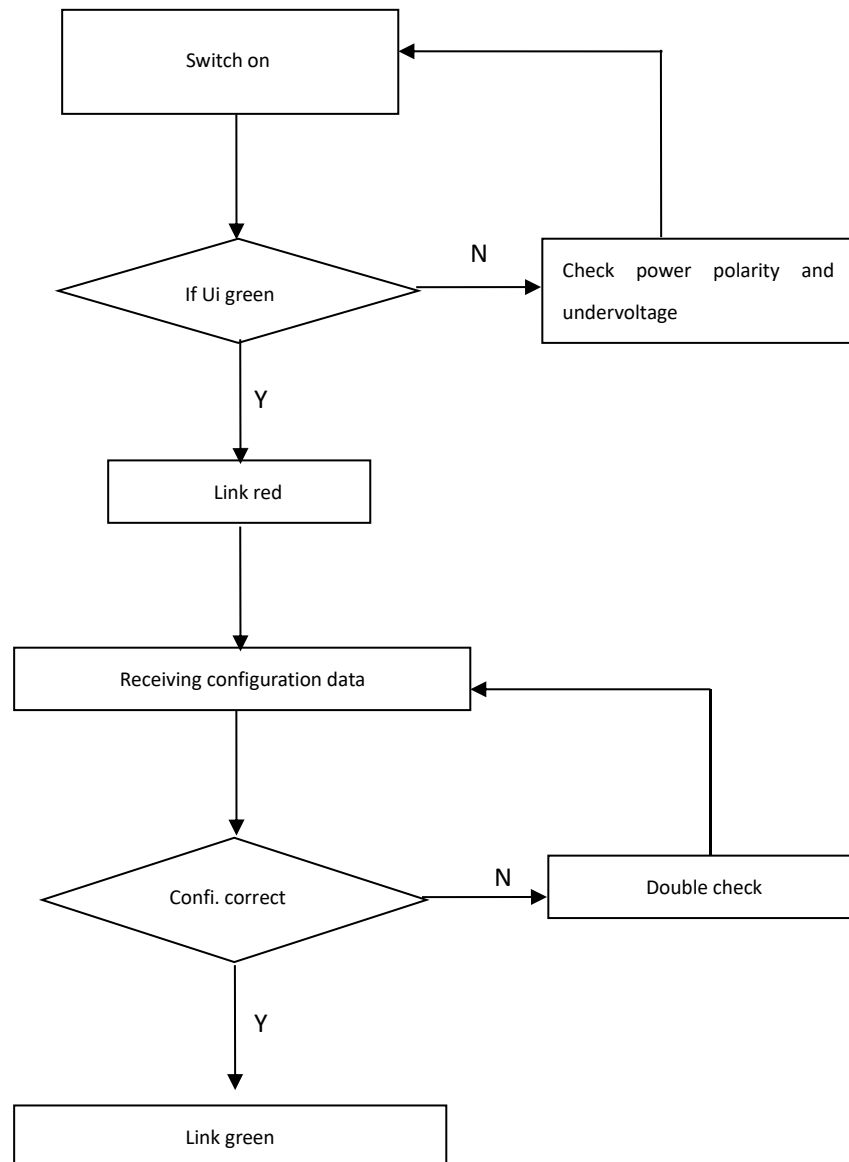
Byte	Bit	Channel	e.g
Input/Output Byte 0	Bit 0	Con0.Pin4	I 0.0 Q 0.0
	Bit 1	Con1.Pin4	I 0.1 Q 0.1
	Bit 2	Con2.Pin4	I 0.2 Q 0.2
	Bit 3	Con3.Pin4	I 0.3 Q 0.3
	Bit 4	Con4.Pin4	I 0.4 Q 0.4
	Bit 5	Con5.Pin4	I 0.5 Q 0.5
	Bit 6	Con6.Pin4	I 0.6 Q 0.6
	Bit 7	Con7.Pin4	I 0.7 Q 0.7
Input Byte 1	Bit 0	Con0.Err	I 1.0
	Bit 1	Con1.Err	I 1.1
	Bit 2	Con2.Err	I 1.2
	Bit 3	Con3.Err	I 1.3
	Bit 4	Con4.Err	I 1.4
	Bit 5	Con5.Err	I 1.5
	Bit 6	Con6.Err	I 1.6
	Bit 7	Con7.Err	I 1.7

4.3 Module Startup Process

Check whether the following requirements for the startup of the Compact67_Slim distributed I/O module system are met:

- Compact67_Slim power, bus and signal wired.
- The module address is set by software.
- Compact67_Slim is configured and downloaded into the controller.
- Supply voltage for controller is switched on.

Startup of Compact67_Slim:



4.4 Module configuration example (Beckhoff)

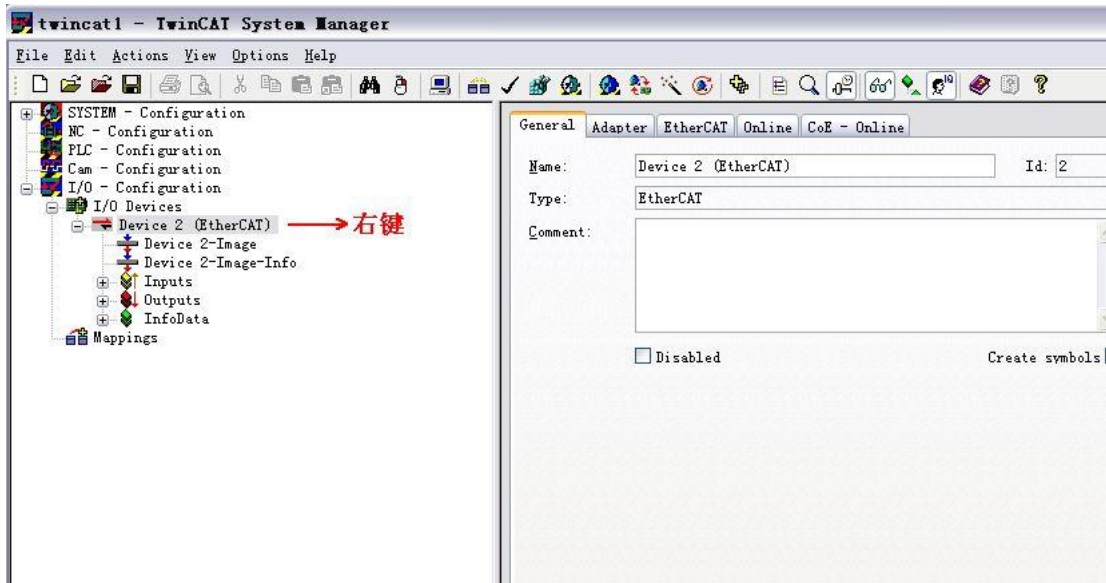
This section, through a case of connection configuration in actual operation process, makes the users fully understand how to use the Compact67_Slim distributed I/O system. In this case, using the ELCO Compact67_Slim as EtherCAT slave station to connect the Beckhoff EtherCAT controller CX1020 under the condition that all power and bus connection have been completed, the device name of Compact67_Slim is assigned as elco67.

The following will show the specific process of software configuration and debugging.

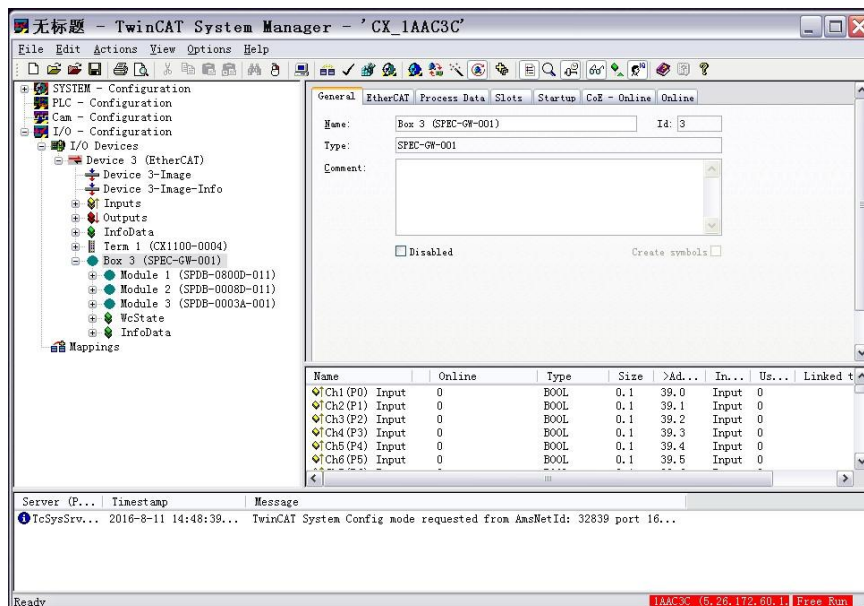
- 1) Start a new TwinCAT project, and connect to the PLC controller, switch to Config Mode. Then search the slave station:

right-click at the arrow marker in the following figure>Scan

Boxes...



- 2) If the gateway is connected to PLC properly, the system can automatically search the Compact67_Slim slave station and see the specific module connection. As follows:

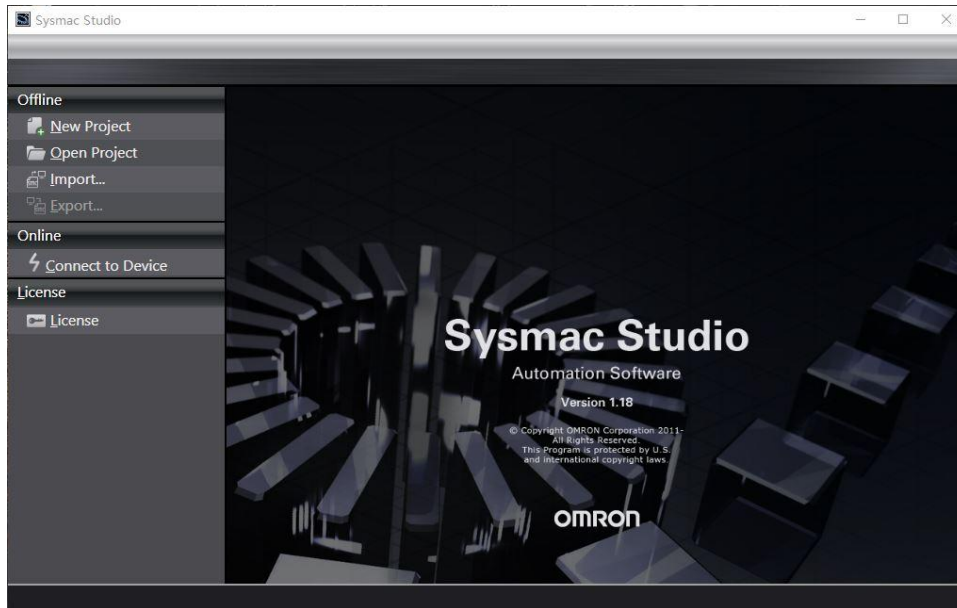


4.5 Module configuration example (Omron)

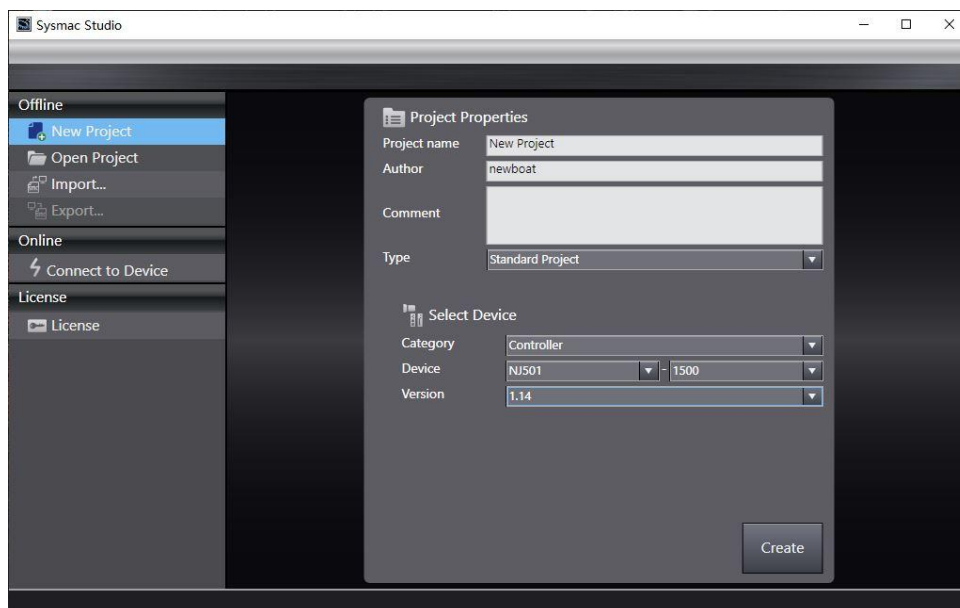
This section, through a case of connection configuration in actual operation process, makes the users fully understand how to use the Compact67_Slim distributed I/O system. In this case, using the ELCO Compact67_Slim as EtherCAT slave station to connect the Omron EtherCAT controller NJ301-1100 under the condition that all power and bus connection have been completed, the device name of Compact67_Slim is assigned as elco67.

The following will show the specific process of software configuration and debugging.

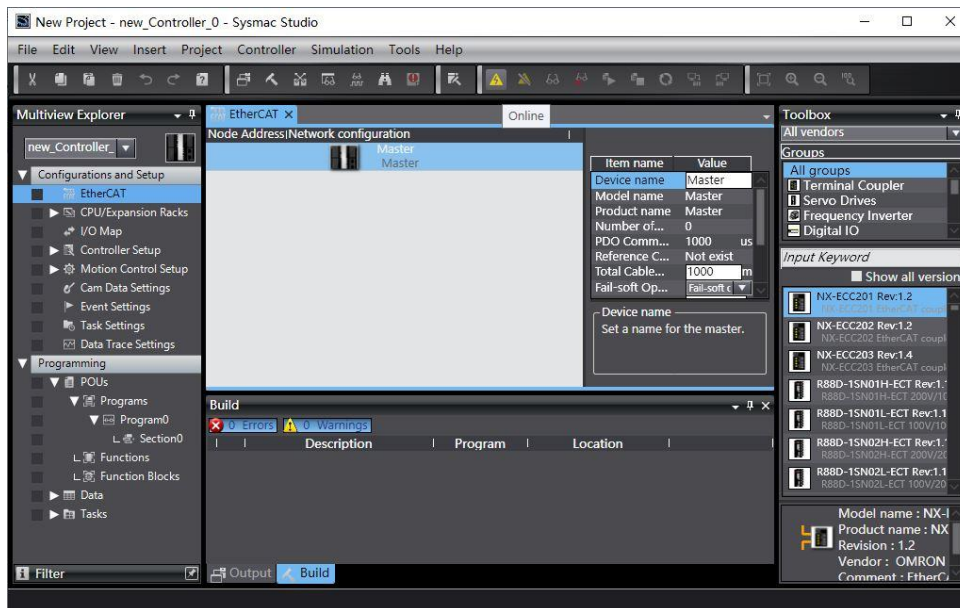
- 1) Open Sysmac Studio, Click 'New Project.'



- 2) Fill in the corresponding information according to the type of PLC and click "Create."

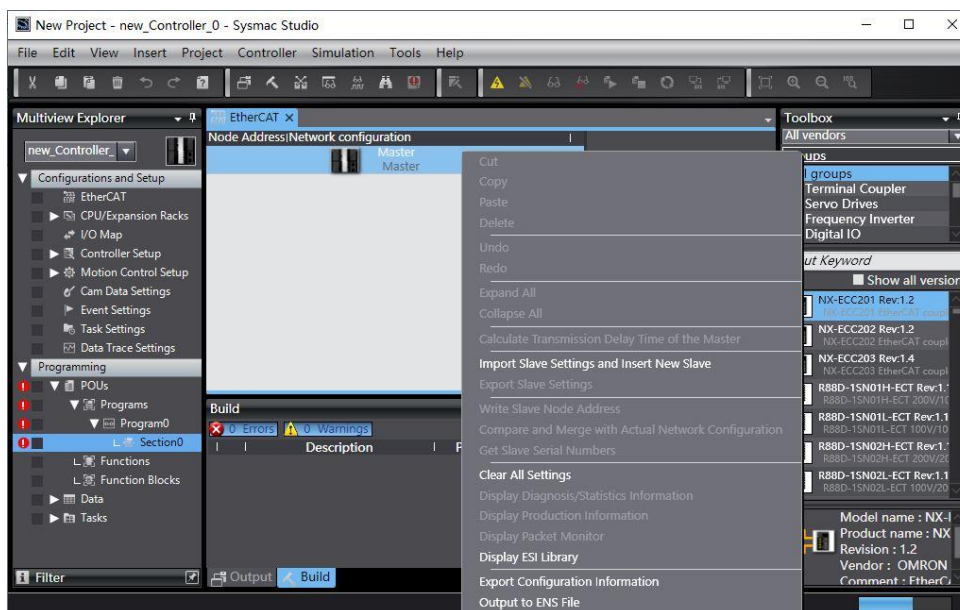


3) Click on the Link icon in the toolbar

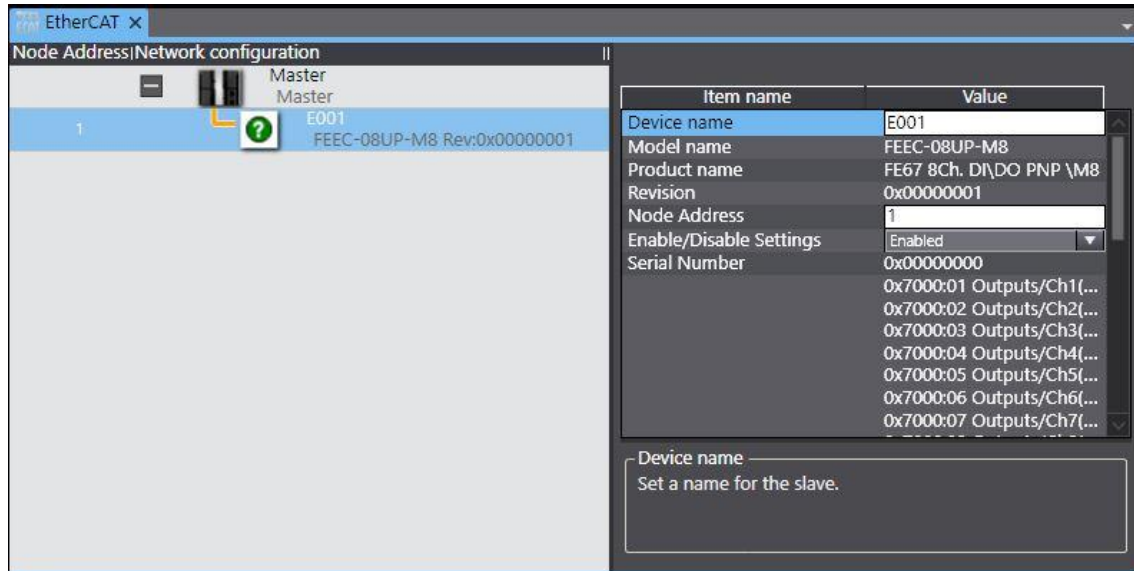


4) Select "Ethercat" in the "Configuration and Settings" list on the right, and you can see the corresponding controller icon

at B.



5) Right-click on the PLC icon and select the item "Configuration and Merge with Physical Network" to see the following interface. You can see the FEEC module appears at A, then click on B, until the FEEC module icon appears under the PLC in the list on the left.



6) After compiling the PLC program and downloading, all IO information can be seen by selecting the "I/O mapping" label.

