

The BC50-series code reader



Description:

- Support for 1D and 2D code detection
- Small appearance, suitable for small space
- Can be set with keys and software, easy to operate
- LED lighting light source, can be controlled up and down separately
- Support for RS232, Profinet, TCP / IP communication
- With a conventional light source and a polarized light model
- With high cost performance

Product model:

Model	Resolution	Focal length (mm)	Light source	Support code system
BC50-K80R-MRS	1280*800	80	Red	Support for 1D / 2D codes 1D -Code128 (GS1-128), Code 93, Code 39, CODABAR 2D-Data Matrix(ECC200),QR
BC50-K130R-MRS	1280*800	130	Red	
BC50-K200R-MRS	1280*800	200	Red	
BC50-K80W-MRS	1280*800	80	White	
BC50-K130W-MRS	1280*800	130	White	
BC50-K200W-MRS	1280*800	200	White	
BC50-K80B-MRS	1280*800	80	Blue	
BC50-K130B-MRS	1280*800	130	Blue	
BC50-K200B-MRS	1280*800	200	Blue	
BC50-K80RP-MRS	1280*800	80	Red, polarization	
BC50-K130RP-MRS	1280*800	130	Red, polarization	
BC50-K200RP-MRS	1280*800	200	Red, polarization	

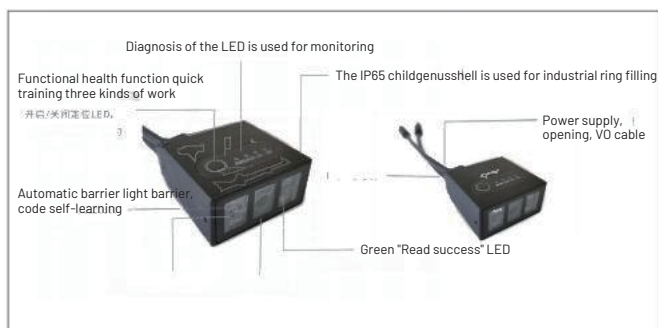
The BC50-series code reader

BC50-K80 Read Distance * (80mm at focal plane FOV 61x38mm)

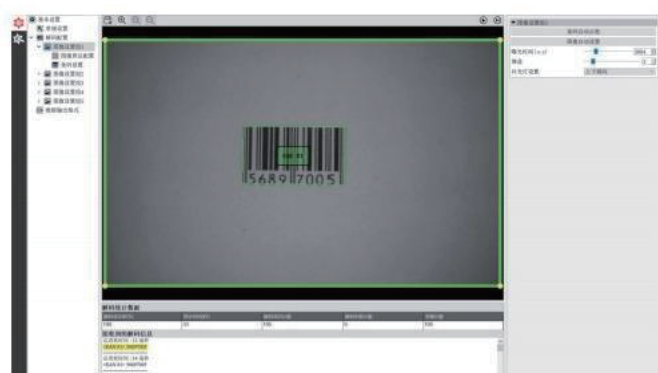
Code type	Exposure time	Gain	Code resolution	Reading distance	The proximal field of view (Horizontal , Vertical)	Far end field of view (Horizontal , Vertical)
Code39	500 us	4	6 mil	30mm-100mm	27x18mm	81x52mm
			8 mil	30mm-120mm	27x18mm	95x62mm
			12 mil	40mm-155mm	34x22mm	122x79mm
			20 mil	70mm-200mm	56x36mm	155x100mm
Code128	500 us	4	6 mil	40mm-110mm	34x22mm	88x57mm
			8 mil	40mm-130mm	34x22mm	102x67mm
			12 mil	50mm-145mm	41x27mm	114x75mm
			20 mil	80mm-215mm	61x38mm	166x105mm
Inter leaved 2 of 5	500 us	4	8 mil	35mm-125mm	20x20mm	99x64mm
			12 mil	35mm-155mm	30x20mm	122x79mm
			20 mil	50mm-205mm	41x27mm	162x100mm
Data Matrix (ECC200)	500 us	4	5 mil	50mm-75mm	41x27mm	59x38mm
			7.5 mil	45mm-100mm	38x24mm	81x52mm
			10 mil	40mm-115mm	34x22mm	91x59mm
			15 mil	35mm-135mm	30x20mm	106x70mm
			20 mil	30mm-150mm	27x18mm	118x77mm

* The above table is the test results of the Grade A test card in the reader around the X axis, the resolution of the code Contrast levels and other environmental factors can affect the test results.

BC50 software



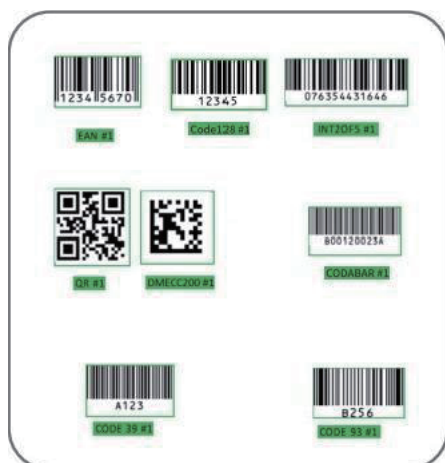
- Simple interface and easy to operate
- With the functions of bar code automatic teaching, automatic image setting and code self-learning
- With five image setting functions, it can set different exposure times and gains respectively to meet the needs of complex decoding applications
- With a variety of image preprocessing functions, it is possible to meet the requirements of complex applications.
- Save ALL / OK / NG images selectively
- The software has its own debugging assistant to observe the decoding results
- Support both Chinese and English



- Advanced configuration
- Intuitive configuration options
 - Rich, comprehensive and easy to use
 - Support for internal trigger, external I / O trigger, external network trigger, and gating trigger
 - External I / O trigger signal supports optional "front" and "rear edge" to meet the requirements of trigger timing
 - Support Serial port and Ethernet string trigger and Profinet bit trigger · Software supports code reader as server-side or client

The BC50-series code reader

Support code system



1D code: Code 128, Code 93, Code 39, EAN / UPC, Interleaved 2 of 5, CODABAR
 2D code: Data Matrix (ECC200), QR

Performance parameter

Power supply	12-24 V dc
Communication protocol	RS232 serial port, Ethernet TCP / IP, Profinet
Communication speed	RS232: 115200 bit/s Ethernet: 10 / 100 Mbit / s
Input	2 PNP or NPN, Vin: 12V-24V, in 5 mA
Output	2 PNP or NPN, Vour: 5V-24V, Iour 140 mA (average current).
Image	1280x800, CMOS
Image speed	60 Frames
Dimensions	50 mm x 48mm x 25mm
External material	Aluminium
Working environment	0 ~ 50 C
	90% maximum relative humidity
IP rating	IP65
Attestation	CE

Fittings

Model	Explain
CB-M12-2000E-17GF	Power supply & IO cable, M12, 17 core, 2 m fly line
CB-M12-5000E-17GF	Power supply & IO cable, M12, 17 core, 5 m fly line
BC-ETH-M02	Ethernet cable, M12-4 pin D code to RJ45, 2 m
BC-ETH-M05	Ethernet cable, M12-4 pin D code to RJ45, 5 m
BT-BC	Right-angle mounting bracket