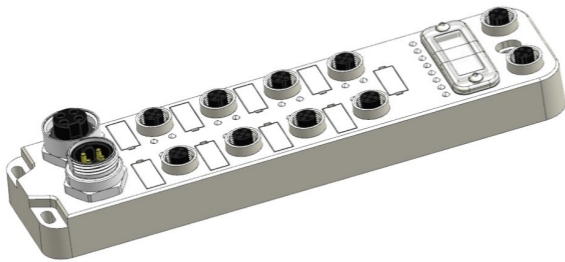
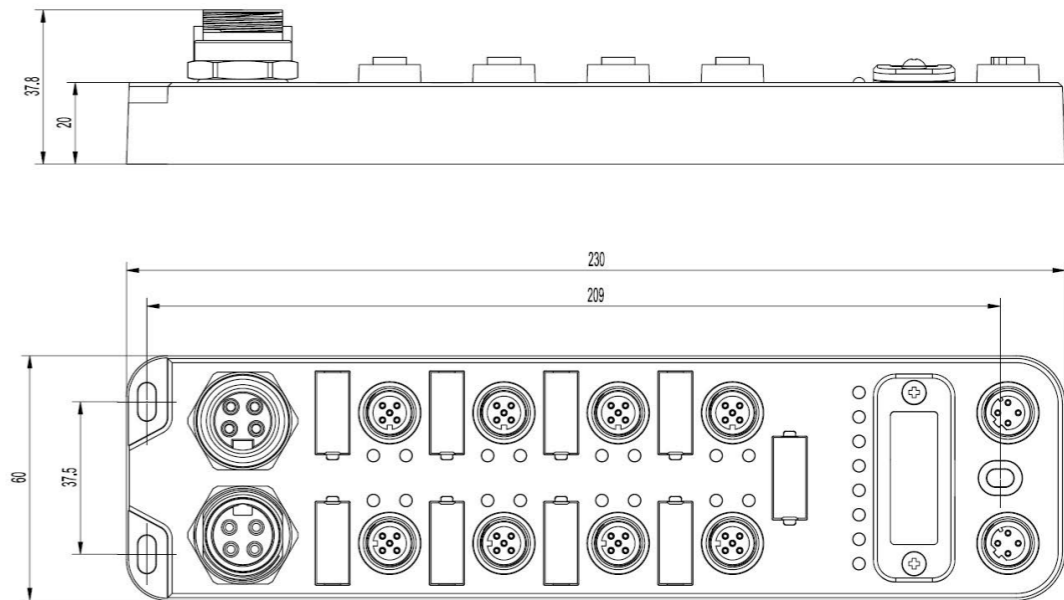


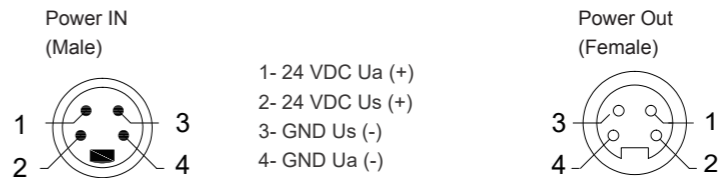
<div><div><div>■ IO-Link Version 1.1.3</div><div>■ Transfer rates: COM1, COM2, COM3</div><div>■ IO-Link ports: Class-A</div><div>■ Multiprotocol for Ethernet</div><div>■ Metal housing</div></div><div><div><div><div></div><div></div></div><div><div></div><div></div></div></div><div><div><div></div><div></div></div><div><div></div><div></div></div></div></div><div><div><div>Ordering data</div><div>Product typeFCEN-8LKM-8A-MP4</div><div>Description8 IO-Link ports</div><div>Communication</div><div>ProtocolEtherNet/IP , Profinet</div><div>Operating modesAuto-negotiation, Auto-MDI/MDI-X</div><div>Transfer rate10/100 Mbps</div><div>AddressingDHCP, BOOTP</div><div>Power supply</div><div>Supply voltage24 VDC(18...30 VDC)</div><div>Self consumptionMax. 200mA</div><div>System&Input supplyUs, Max. 8A</div><div>Output supplyUa, Max. 8A</div><div>Electrical isolationUs and Ua: 24V separated, 0V connected</div><div>Connections</div><div>Power supply2 x 7/8" 4pin, Male+Female</div><div>Fieldbus2 x M12 D-code 4pin, Female</div><div>Signals8 x M12 A-code 5pin, Female</div><div>Interface</div><div>IO-Link ports8</div><div>IO-Link type8*Class-A</div><div>IO-Link versionIO-Link V1.1.3</div><div>IO-Link communication ratesCOM1(4.8kbps), COM2(38.4kbps), COM3(230.4kbps)</div><div>Input channelsMax. 16 (8*Pin4+8*Pin2)</div><div>Input supply currentPin1&Pin3: 1.6A per channel</div><div>Input typePNP sensors, mechanical switches, dry contacts, etc..</div><div>Input delay1.6 ms</div><div>Output channelsMax. 8 (8*Pin2)</div><div>Output currentMax. 2A per channel</div><div>Output typeLamps, solenoidvalve, etc..</div><div>Output frequencyResistive load 100Hz, Inductive load 5Hz</div><div>Diagnostics</div><div>Communication indicationLED indication, Communication message</div><div>Voltage detectionSupport, Low voltage alarm</div><div>Short-circuit & OverloadSupport, LED indication</div><div>General data</div><div>Housing materialCasting Zinc Alloy</div><div>ProtectionIP67</div><div>TemperatureOperating -25...+70 °C, Storage -40...+85 °C</div><div>Dimensions (W*H*D)60x230x37.8 mm</div></div></div></div>	
---	--



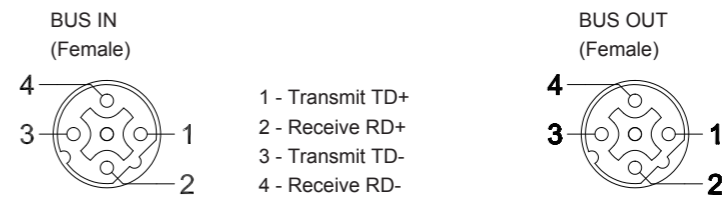
Dimensions drawing



Voltage supply drawing



Fieldbus drawing



I/O Port drawing

