
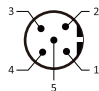



OSM300 SERIES

ARTICLE PROPERTIES

SENSOR TYPE	Long laser distance sensor	CONNECTION TYPES (see table)
SIZE	104.5 × 69.6 × 77.9 mm	<ul style="list-style-type: none"> M12 connector
OPERATING DISTANCE	See table	A-coded 
DETECTION MODE	Diffuse ranging	B-coded 
		D-coded 

TECHNICAL DATA

OPERATING VOLTAGE	10 ... 30 V DC	SWITCH OUTPUT	Up to 2 optional
OPERATING CURRENT	< 100 mA @ 24 V DC	LOAD CURRENT	< 100 mA
LIGHT SOURCE	Red laser (650 nm) / class 2	SERIAL INTERFACE	IO-LINK / RS-422
LIGHT SPOT SIZE	20 mm @ 20 m	HOUSING MATERIAL	Housing: Die -cast aluminum Front screen: PMMA
REPEATABILITY	2 mm	VOLTAGE WITHSTANDING	650 V/AC, 50/60 Hz, 60 s
RESOLUTION	1 mm	REVERSE POLARITY PROTECTION	Yes
MEASUREMENT TIME	0.1 s white standard target	OVERLOAD RESISTANCE	Yes
DISPLAP	6-digit OLED display	SHORT CIRCUIT PROTECTION	Yes
ANALOG	4 ... 20 mA / 0 ... 5 V / 0 ... 10 V	MTTF	43 years

ENVIRONMENTAL CONDITIONS

OPERATING ENVIRONMENT HUMIDITY	35 % to 85 % RH (no condensation)	INSULATION IMPEDENCE	≥ 20 MΩ (500 V DC)
PROTECTION CLASS	IP67	SHOCK RESISTANCE (EN 60068-2-27)	500 m/s ² (50 G) 3 times X, Y, Z respectively
STORAGE TEMPERATURE	-25 ... +70 °C	IMPACT RESISTANCE (EN 60068-2-6)	Complex amplitude 1.5 mm 10 ... 50 Hz (2hr X, Y, Z respectively)
AMBIENT TEMPERATURE	-10 ... +50 °C	ANTI-AMBIENT LIGHT	≤ 3000 lx

STANDARDS AND DIRECTIVES

EMC DIRECTIVE 2014/30/EU	EN IEC 60947-5-2	ROHS DIRECTIVE 2011/65/EU	EN IEC 63000
---------------------------------	------------------	----------------------------------	--------------

OSM300 SERIES

APPROVALS

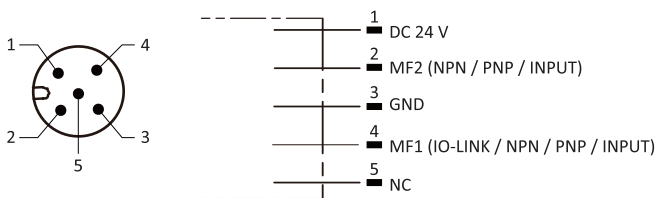


DETECTION MODE DIFFUSE RANGING

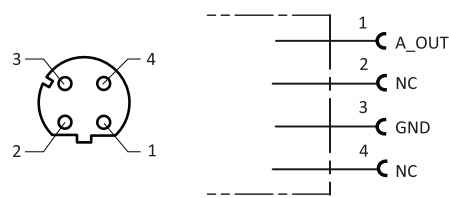
Article number	Operating distance	Light source	Interface	Connection	Dimensions
OSM300-KL20S2A422IOQ12	0.15 ... 20 m	Red laser	IO-Link + Push-pull (WD1) + Analog (WD2) + RS-422 (WD3)	M12 connector	see Fig. 1
¹⁾ Measurement error: ±2 mm under specific measurement conditions; ±3 mm (15 ... +30 °C); ±5 mm (-10 ... +50 °C) ²⁾ Install accessories Fixed bracket (optional) : EOSM300-1 can be used alone; EOSM300-2 must be used together with EOSM300-1					

WIRING DIAGRAMS

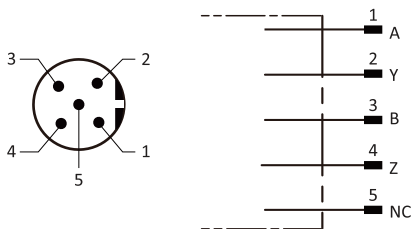
WD1



WD2



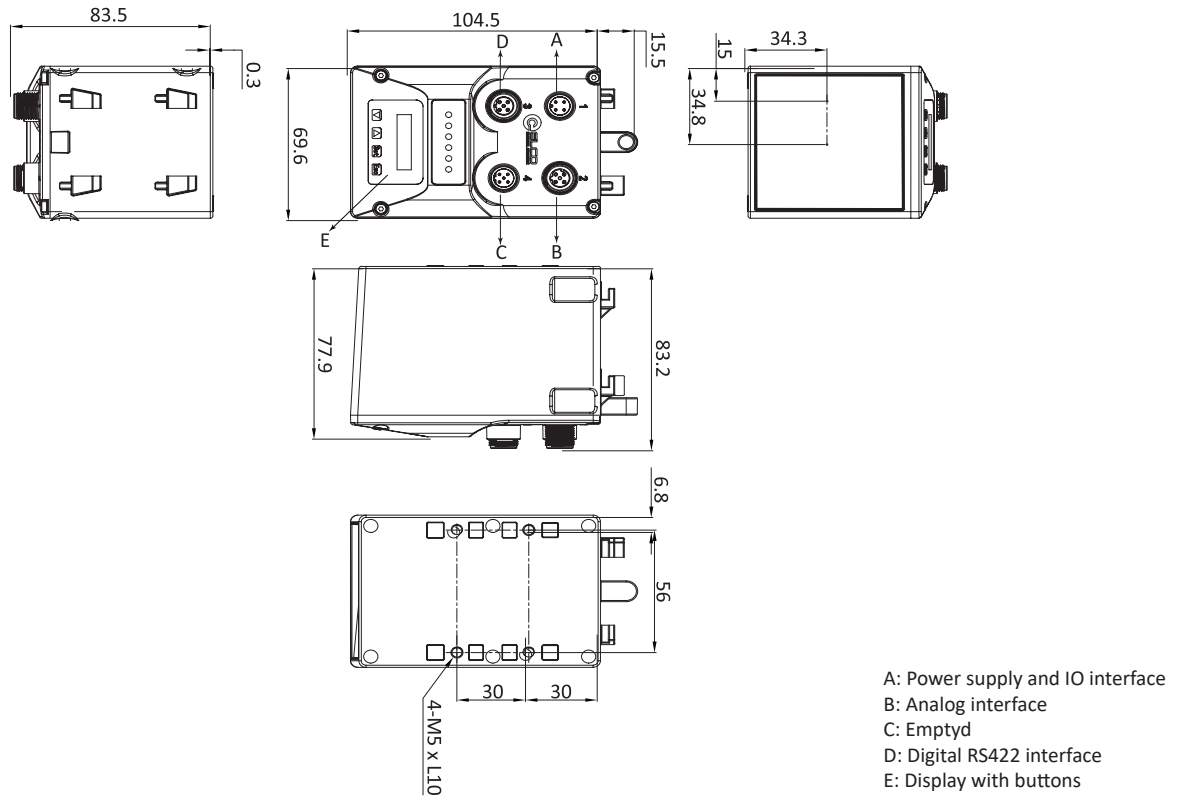
WD3



OSM300 SERIES

DIMENSIONS (mm)

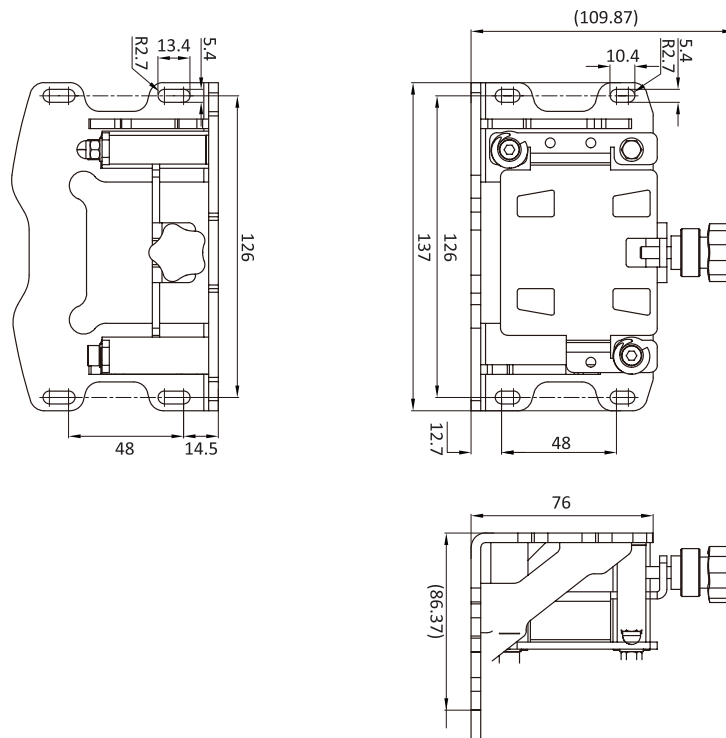
Fig. 1 Connector



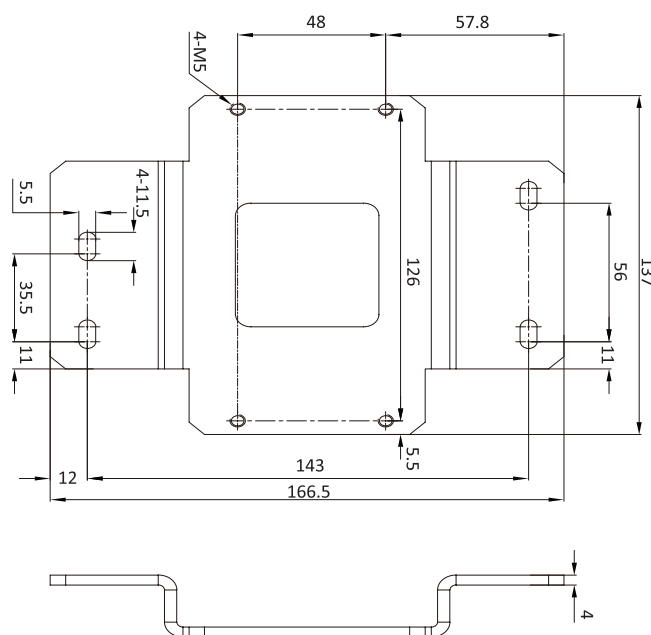
OSM300 SERIES

INTALL ACCESSORIES (OPTIONAL)

EOSM300-1



EOSM300-2



OSM300 SERIES

SALES AND SERVICE

Tianjin Elco Automation Co., Ltd

No. 12, 4th XEDA Branch Road
Xiqing Economic-Technological Development Area
Tianjin 300385, P.R. China
Office Phone: 022 23788282
E-Mail: info@elco.cn
www.elco-holding.com.cn

Elco Industrie Automation GmbH

Benzstrasse 7
71720 Oberstenfeld,
Deutschland
Office Phone: +49 7062 / 6599-260
E-Mail: info@elco-automation.de
www.elco-automation.de

Elco Automation LLC

1097 Highway 101 South, Suite D-3 Greer
South Carolina 29651, USA
Office Phone: +1 864-581-7431
E-Mail: infousa@elcoautomation.com
www.elcoautomation.com

Elco Industrial Automation Pvt Ltd.

No 80, 1st Main, 2nd Cross, Royal Enclave,
Sidedahalli, Nagasandra Bangalore 560073, India
Office Phone: +91-7259931777
E-Mail: info@elcoautomation.in
www.elcoautomation.com

Elco Automation Korea Ltd.

706, 17 Daehak 4-ro, Yeongtong-gu, Suwon-si,
Gyeonggi-do, Republic of Korea, 16226
Office Phone: +82-31-216-7890
E-Mail: sales@elcoautomation.co.kr
www.elcoautomation.com