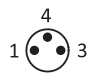



OS10S-TK SERIES

ARTICLE PROPERTIES

<b>SENSOR TYPE</b>	Photoelectric sensor	<b>CONNECTION TYPES</b> (see table)	
<b>SIZE</b>	See dimensions	• Cable	PVC, 0.14 mm <sup>2</sup> , 2 m**
<b>OPERATING DISTANCE</b>	See table	• M8 connector 3-pin, A-coded	
<b>DETECTION MODE</b>	Vitreous body detect diffused	• M8 connector 4-pin, A-coded	

\*\* Other cable lengths are available on request

TECHNICAL DATA

<b>OPERATING VOLTAGE</b>	10 ... 30 V DC	<b>LOAD CURRENT</b>	≤ 100 mA
<b>RIPPLE VOLTAGE</b>	≤ 10 %	<b>HOUSING MATERIAL</b>	PC + PBT
<b>LASER CLASS</b>	Red beam 630 nm Blue beam 460 nm	<b>VOLTAGE WITHSTANDING</b>	1000 V/AC, 50/60 Hz, 60 s
<b>LIGHT SPOT SIZE</b>	8 cm @100 mm (TK100) 8 mm @100 mm (TK250)	<b>REVERSE POLARITY PROTECTION</b>	Yes
<b>OUTPUT</b>	PNP / NPN	<b>OVERLOAD RESISTANCE</b>	Yes
<b>FREQUENCY</b>	See table	<b>SHORT CIRCUIT PROTECTION</b>	Yes
<b>CURRENT CONSUMPTION</b>	24 V 25 mA	<b>MTTF</b>	268 years

ENVIRONMENTAL CONDITIONS

<b>OPERATING ENVIRONMENT HUMIDITY</b>	35 % to 85 % RH (no condensation)	<b>INSULATION IMPEDENCE</b>	≥ 50 MΩ (500 V DC)
<b>PROTECTION CLASS</b>	IP67	<b>SHOCK RESISTANCE (EN 60068-2-27)</b>	500 m/s <sup>2</sup> (50 G) 3 times X, Y, Z respectively
<b>STORAGE TEMPERATURE</b>	-40 ... +70 °C	<b>IMPACT RESISTANCE (EN 60068-2-6)</b>	Complex amplitude 1.5 mm 10 ... 50 Hz (2hr X, Y, Z respectively)
<b>AMBIENT TEMPERATURE</b>	-20 ... +60 °C	<b>ANTI-AMBIENT LIGHT</b>	≤ 5000 Lux

STANDARDS AND DIRECTIVES

<b>EMC DIRECTIVE 2014/30/EU</b>	EN IEC 60947-5-2	<b>ROHS DIRECTIVE 2011/65/EU</b>	EN IEC 63000
---------------------------------	------------------	----------------------------------	--------------

APPROVALS



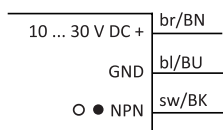
OS10S-TK SERIES

DETECTION MODE DIFFUSED, VITREOUS BODY DETECT

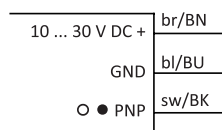
Article number	Operating distance	Light source	Frequency	Output (wiring diagram)	Switching mode	Connection	Dimensions
OS10S-TK100CN6	100 mm	Red	200 Hz	NPN (WD1)	L.O / D.O	2 m cable	see Fig. 1
OS10S-TK100CP6	100 mm	Red	200 Hz	PNP (WD2)	L.O / D.O	2 m cable	see Fig. 1
OS10S-TK100CN6Q8	100 mm	Red	200 Hz	NPN (WD3)	L.O / D.O	M8 connector, 4-pin	see Fig. 3
OS10S-TK100CP6Q8	100 mm	Red	200 Hz	PNP (WD4)	L.O / D.O	M8 connector, 4-pin	see Fig. 3
OS10S-TK100CN6Q8.3	100 mm	Red	200 Hz	NPN (WD5)	L.O / D.O	M8 connector, 3-pin	see Fig. 3
OS10S-TK100CP6Q8.3	100 mm	Red	200 Hz	PNP (WD6)	L.O / D.O	M8 connector, 3-pin	see Fig. 3
OS10S-TK250CN6	250 mm	Blue	200 Hz	NPN (WD1)	L.O / D.O	2 m cable	see Fig. 2
OS10S-TK250CP6	250 mm	Blue	200 Hz	PNP (WD2)	L.O / D.O	2 m cable	see Fig. 2
OS10S-TK250CN6Q8	250 mm	Blue	200 Hz	NPN (WD3)	L.O / D.O	M8 connector, 4-pin	see Fig. 4
OS10S-TK250CP6Q8	250 mm	Blue	200 Hz	PNP (WD4)	L.O / D.O	M8 connector, 4-pin	see Fig. 4
OS10S-TK250CN6Q8.3	250 mm	Blue	200 Hz	NPN (WD5)	L.O / D.O	M8 connector, 3-pin	see Fig. 4
OS10S-TK250CP6Q8.3	250 mm	Blue	200 Hz	PNP (WD6)	L.O / D.O	M8 connector, 3-pin	see Fig. 4

WIRING DIAGRAMS

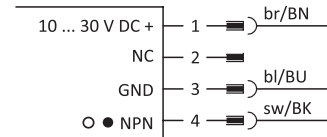
WD1 NPN / Light on | Dark on



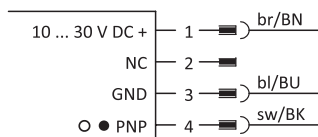
WD2 PNP / Light on | Dark on



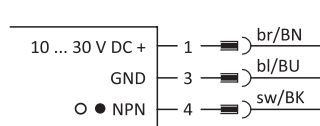
WD3 NPN / Light on | Dark on



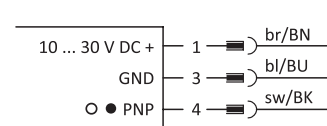
WD4 PNP / Light on | Dark on



WD5 NPN / Light on | Dark on



WD6 PNP / Light on | Dark on



OS10S-TK SERIES

DIMENSIONS (mm)

Fig. 1 Cable, OS10S-TK100

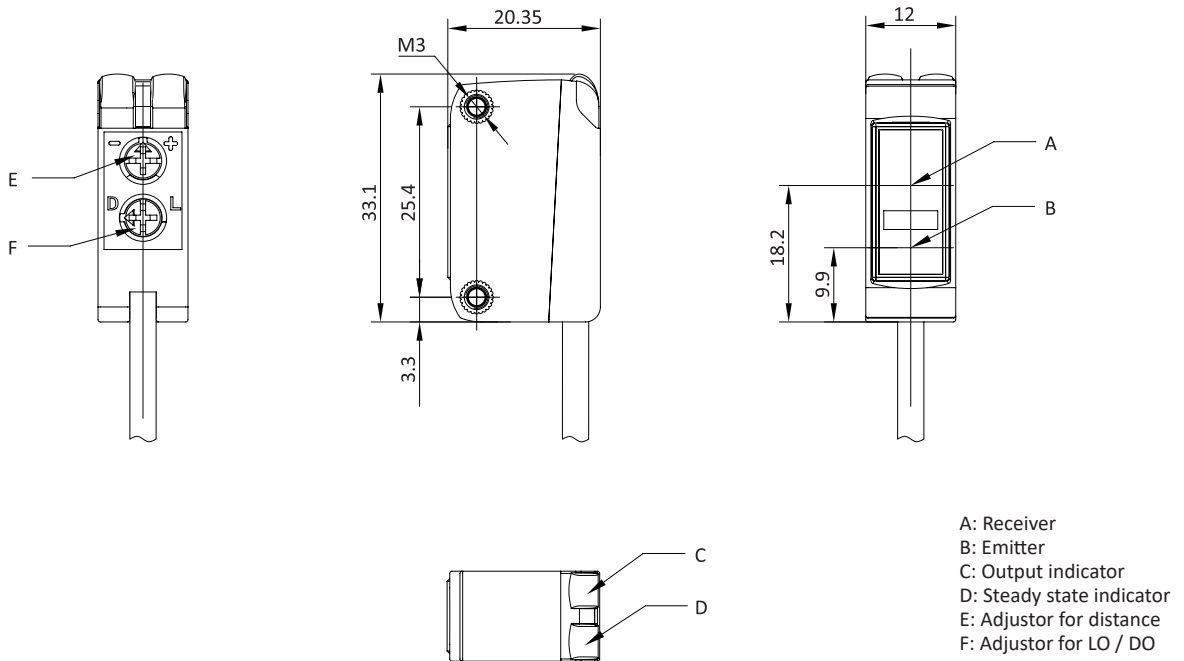
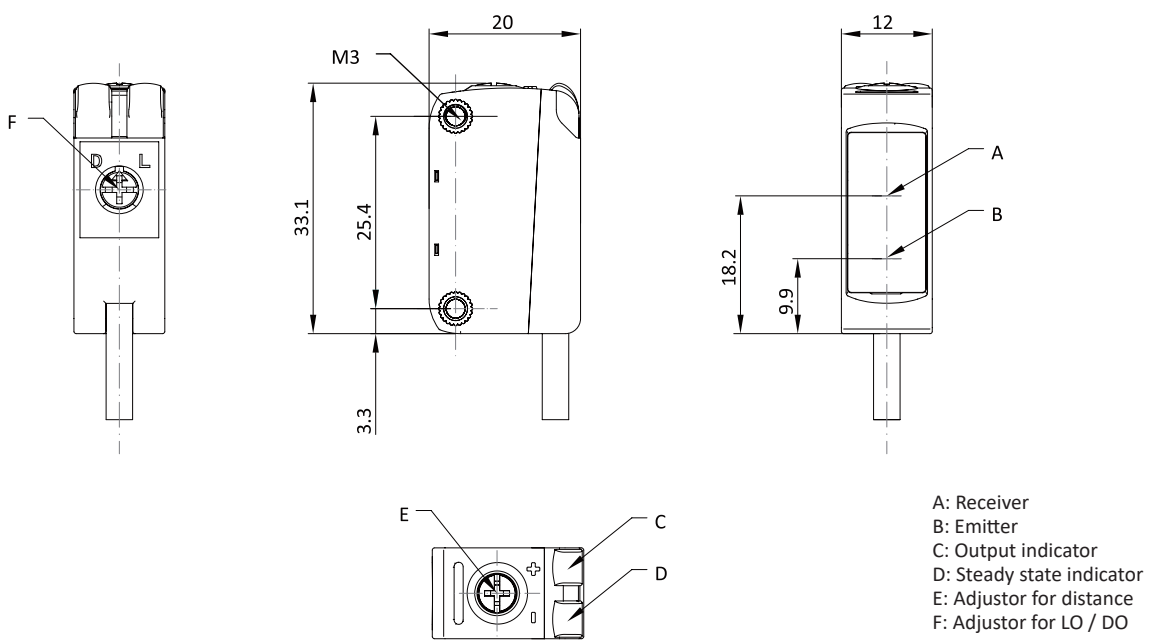


Fig. 2 Cable, OS10S-TK250



OS10S-TK SERIES

DIMENSIONS (mm)

Fig. 3 M8 connector, OS10S-TK100

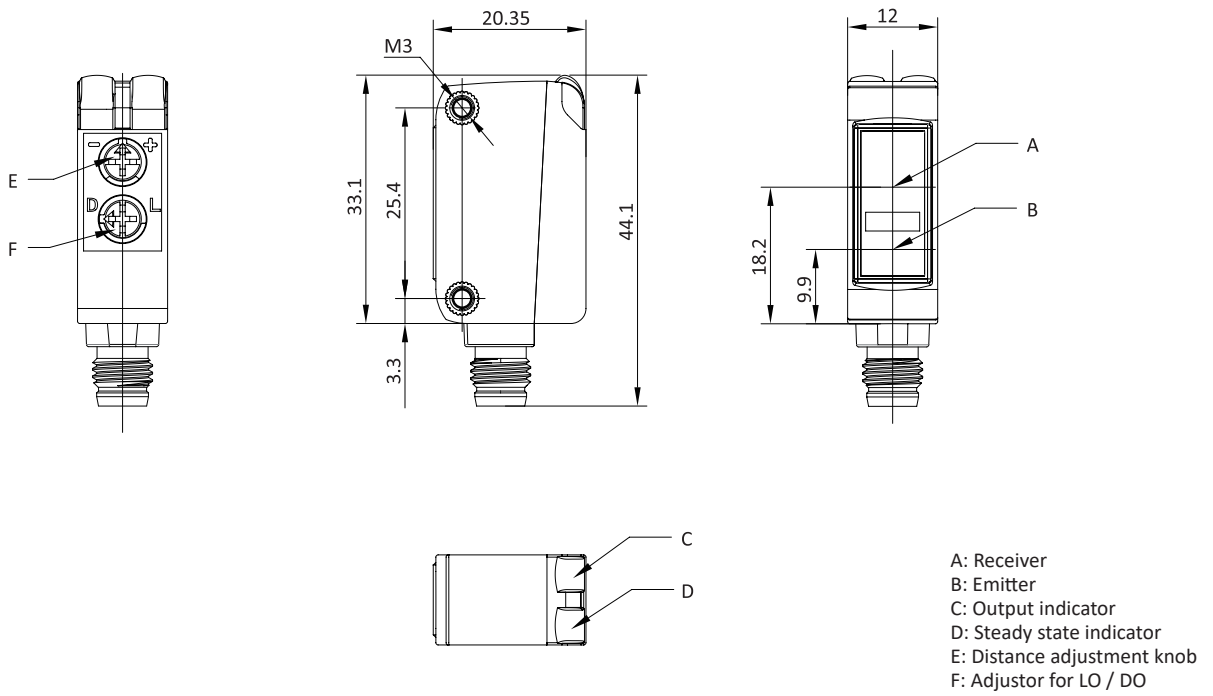
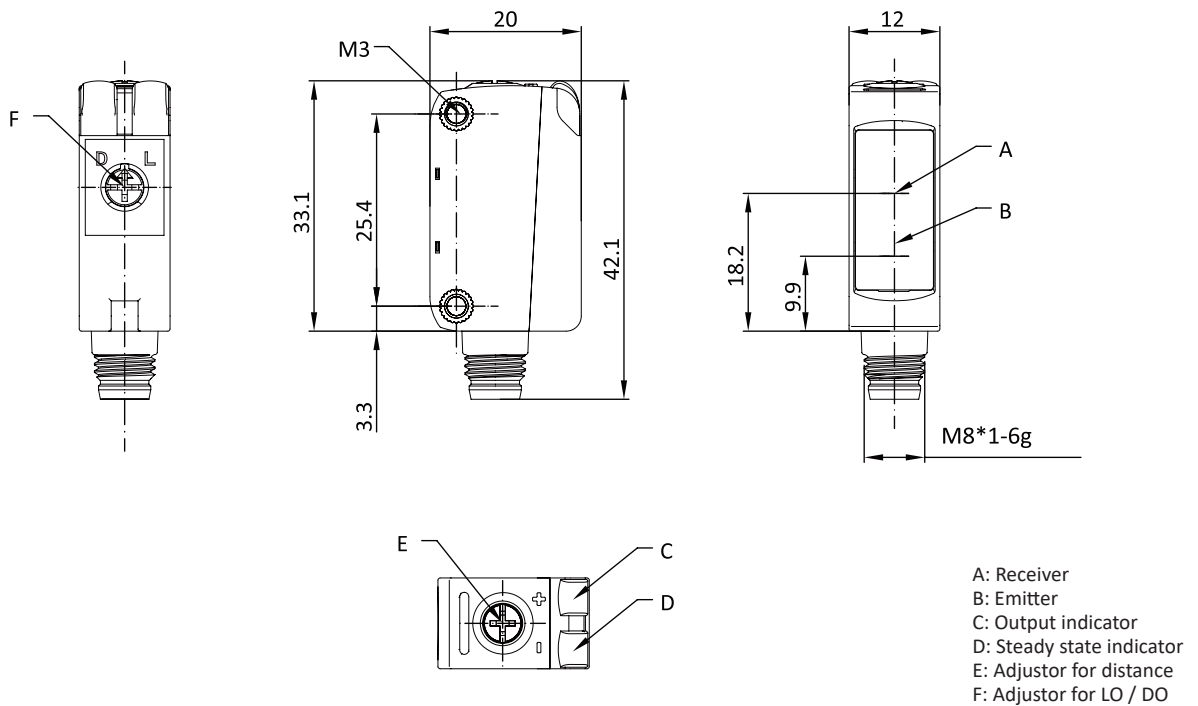


Fig. 4 M8 connector, OS10S-TK250



## OS10S-TK SERIES

---

### SALES AND SERVICE

**Tianjin Elco Automation Co., Ltd**

No. 12, 4th XEDA Branch Road  
Xiqing Economic-Technological Development Area  
Tianjin 300385, P.R. China  
Office Phone: 022 23788282  
E-Mail: [info@elco.cn](mailto:info@elco.cn)  
[www.elco-holding.com.cn](http://www.elco-holding.com.cn)

**Elco Industrie Automation GmbH**

Benzstrasse 7  
71720 Oberstenfeld,  
Deutschland  
Office Phone: +49 7062 / 6599-260  
E-Mail: [info@elco-automation.de](mailto:info@elco-automation.de)  
[www.elco-automation.de](http://www.elco-automation.de)

**Elco Automation LLC**

1097 Highway 101 South, Suite D-3 Greer  
South Carolina 29651, USA  
Office Phone: +1 864-581-7431  
E-Mail: [infousa@elcoautomation.com](mailto:infousa@elcoautomation.com)  
[www.elcoautomation.com](http://www.elcoautomation.com)

**Elco Industrial Automation Pvt Ltd.**

No 80, 1<sup>st</sup> Main, 2<sup>nd</sup> Cross, Royal Enclave,  
Sidedahalli, Nagasandra Bangalore 560073, India  
Office Phone: +91-7259931777  
E-Mail: [info@elcoautomation.in](mailto:info@elcoautomation.in)  
[www.elcoautomation.com](http://www.elcoautomation.com)

**Elco Automation Korea Ltd.**

706, 17 Daehak 4-ro, Yeongtong-gu, Suwon-si,  
Gyeonggi-do, Republic of Korea, 16226  
Office Phone: +82-31-216-7890  
E-Mail: [sales@elcoautomation.co.kr](mailto:sales@elcoautomation.co.kr)  
[www.elcoautomation.com](http://www.elcoautomation.com)