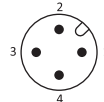


OM18-TK SERIES

ARTICLE PROPERTIES

SENSOR TYPE	Photoelectric sensor	CONNECTION TYPES (see table)
SIZE	M18x1	<ul style="list-style-type: none"> • Cable PVC, 0.34 mm², 2 m** • M12 connector
OPERATING DISTANCE	See table	
DETECTION MODE	Diffuse reflective vitreous body detect	

** Other cable lengths are available on request

TECHNICAL DATA

OPERATING VOLTAGE	10 ... 30 V DC	LOAD CURRENT	≤ 100 mA
RIPPLE VOLTAGE	≤ 10 %	HOUSING MATERIAL	Brass nickel-plated
LASER CLASS	850 nm	VOLTAGE WITHSTANDING	1000 V/AC, 50/60 Hz, 60 s
LIGHT SPOT SIZE	∅ 15 mm (100 mm) ∅ 50 mm (200 mm)	REVERSE POLARITY PROTECTION	Yes
OUTPUT	PNP / NPN	OVERLOAD RESISTANCE	Yes
FREQUENCY	See table	SHORT CIRCUIT PROTECTION	Yes
CURRENT CONSUMPTION	≤ 15 mA	MTTF	359 years

ENVIRONMENTAL CONDITIONS

OPERATING ENVIRONMENT HUMIDITY	35 % to 85 % RH (no condensation)	INSULATION IMPEDENCE	≥20 MΩ (500 V DC)
PROTECTION CLASS	IP67	SHOCK RESISTANCE (EN 60068-2-27)	500 m/s ² (50 G) 3 times X, Y, Z respectively
STORAGE TEMPERATURE	-25 ... +65 °C	IMPACT RESISTANCE (EN 60068-2-6)	Complex amplitude 1.5 mm 10 ... 50 Hz (2hr X, Y, Z respectively)
AMBIENT TEMPERATURE	-40 ... +70 °C	ANTI-AMBIENT LIGHT	≤ 5000 Lux

STANDARDS AND DIRECTIVES

EMC DIRECTIVE 2014/30/EU	EN IEC 60947-5-2
ROHS DIRECTIVE 2011/65/EU	EN IEC 63000

APPROVALS



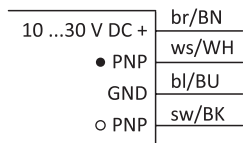
OM18-TK SERIES

DETECTION MODE DIFFUSE REFLECTIVE VITREOUS BODY DETECT

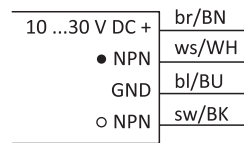
Article number	Operating distance	Light source	Frequency	Output (wiring diagram)	Switching mode	Connection	Dimensions
OM18-TK100VP6	100 mm	Infrared	100 Hz	PNP (WD1)	L.O + D.O	2 m cable	see Fig. 1
OM18-TK100VN6	100 mm	Infrared	100 Hz	NPN (WD2)	L.O + D.O	2 m cable	see Fig. 1
OM18-TK100VP6Q	100 mm	Infrared	100 Hz	PNP (WD3)	L.O + D.O	M12 connector	see Fig. 2
OM18-TK100VN6Q	100 mm	Infrared	100 Hz	NPN (WD4)	L.O + D.O	M12 connector	see Fig. 2
OM18-TK200VP6	200 mm	Infrared	100 Hz	PNP (WD1)	L.O + D.O	2 m cable	see Fig. 1
OM18-TK200VN6	200 mm	Infrared	100 Hz	NPN (WD2)	L.O + D.O	2 m cable	see Fig. 1
OM18-TK200VP6Q	200 mm	Infrared	100 Hz	PNP (WD3)	L.O + D.O	M12 connector	see Fig. 2
OM18-TK200VN6Q	200 mm	Infrared	100 Hz	NPN (WD4)	L.O + D.O	M12 connector	see Fig. 2

WIRING DIAGRAMS

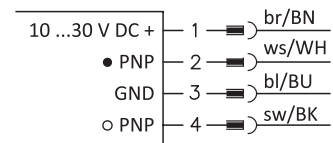
WD1 PNP / Light on | Dark on



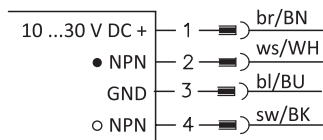
WD2 NPN / Light on | Dark on



WD3 PNP / Light on | Dark on



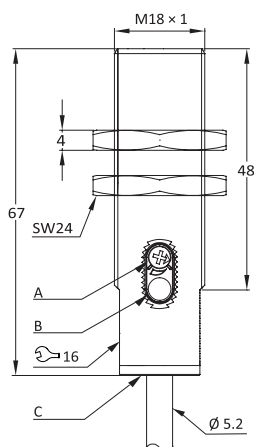
WD4 NPN / Light on | Dark on



OM18-TK SERIES

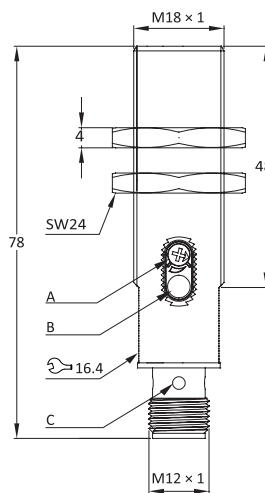
DIMENSIONS

Fig. 1 OM18 with cable



- A Sensitivity adjustment
- B Steady state indicator
- C Output indicator
- ↻ Wrench slot

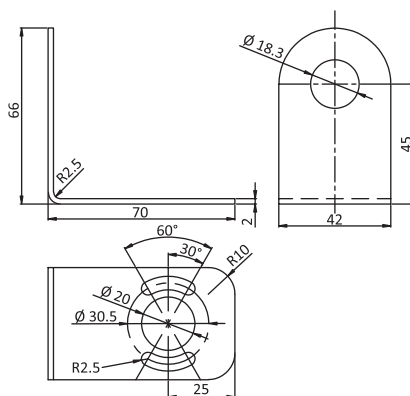
Fig. 2 OM18 with M12 connector



- A Sensitivity adjustment
- B Steady state indicator
- C Output indicator
- ↻ Wrench slot

MOUNTING BRACKET (OPTIONAL)

EOM18-1



OM18-TK SERIES

SALES AND SERVICE

Tianjin Elco Automation Co., Ltd

No. 12, 4th XEDA Branch Road
Xiqing Economic-Technological Development Area
Tianjin 300385, P.R. China
Office Phone: 022 23788282
E-Mail: info@elco.cn
www.elco-holding.com.cn

Elco Industrie Automation GmbH

Benzstrasse 7
71720 Oberstenfeld,
Deutschland
Office Phone: +49 7062 / 6599-260
E-Mail: info@elco-automation.de
www.elco-automation.de

Elco Automation LLC

1097 Highway 101 South, Suite D-3 Greer
South Carolina 29651, USA
Office Phone: +1 864-581-7431
E-Mail: infousa@elcoautomation.com
www.elcoautomation.com

Elco Industrial Automation Pvt Ltd.

No 80, 1st Main, 2nd Cross, Royal Enclave,
Sidedahalli, Nagasandra Bangalore 560073, India
Office Phone: +91-7259931777
E-Mail: info@elcoautomation.in
www.elcoautomation.com

Elco Automation Korea Ltd.

706, 17 Daehak 4-ro, Yeongtong-gu, Suwon-si,
Gyeonggi-do, Republic of Korea, 16226
Office Phone: +82-31-216-7890
E-Mail: sales@elcoautomation.co.kr
www.elcoautomation.com