

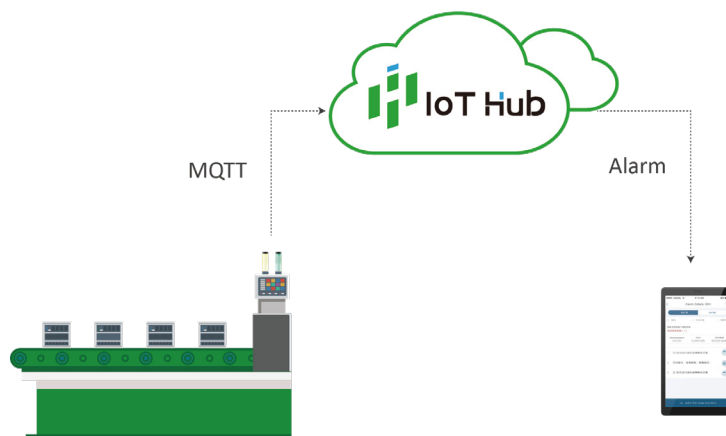
EIOT-LS SERIES

PRODUCT DESCRIPTION

EIoT-LS series terminal is a 60 mm signal indicating product integrating IoT technology. The light source part adopts modular LED indicator lamp, which is developed based on embedded technology. It can be networked through communication modes such as 4G and WiFi, and the protection level reaches IP67 (including M12 interface). It can identify the digital and analog quantities provided by field devices, make intelligent instructions, and quickly upload data to the cloud, so as to fully meet the needs of customers for intelligent indication and data acquisition.

This product supports the deep application expansion based on IoT Hub and ELCO Internet of Things platform, supports the software to define the color of status signals, has the characteristics of uniform and bright light source on site indication, is applied to the collection and monitoring of production line equipment, supports the expansion of third-party system data interface services, including various industrial field systems (Andon, PTL, etc.), realizes the independent collection and uploading of equipment data, and has the function of intelligent indication and guidance.

PRODUCT DESCRIPTION



EIoT-LS series network intelligent column lamp products intelligently customize the indication of equipment status through digital quantity and analog quantity provided by the equipment, and then upload the data to IoT Hub or other system platforms through MQTT protocol to complete the collection and processing of equipment data on the application site, so as to meet the requirements of users for the collection and monitoring of relevant data. With the standard version of Bluetooth communication management applet, users can freely complete product parameter configuration, color indication, etc, and realize the configuration management function of cloud and local complementarity. Typical application scenarios include various types of Andon, PTL systems, industrial Internet of Things, industrial Internet systems, etc. Analog signals support 0 ... 20 mA signal types, and digital signals support the maximum level of 24 V types, so as to realize intelligent indication and equipment data acquisition for equipment working state monitoring, alarm state monitoring, standby state and manual state.

EIoT-LS series terminal can be used to monitor all kinds of machines, wires, equipment and other equipment, and realize alarm or signal display of equipment failure, operation quality, material pulling and other scenes in the automatic process. It is convenient for on-site point indication, and can cooperate with IoT platform and application to realize system interaction and application of related information, help equipment manufacturers to provide IoT supporting products and solutions, help system integrators to provide equipment layer access terminals or edge layer acquisition and monitoring terminal products and solutions, and help end users to realize IoT capacity building.

EIOT-LS SERIES

PRODUCT FEATURES

HARDWARE CONFIGURATION

- Embedded design, the product is safe and stable, and can work continuously for 7 * 24 hours
- Support ELCO standard 8-core M12 interface design
- Support 16*3 RGB tri-color status lights and 16*3 monochrome status lights, and intelligently present 16 different colors including red, green and blue
- Choose to configure 4G and WiFi communication versions
- BLE communication module is standard, and near-field quick connection equipment is configured
- Support digital and analog input interface, with a total of 1 analog and 4 digital, to meet rich scene requirements

DATA ACQUISITION AND CONTROL

- It integrates the functions of digital quantity, analog data acquisition and intelligent indication
- Analog acquisition attribute: current: 0 ... 20 mA
- Digital quantity acquisition attributes: voltage: 0, 24 V
- Support more than ten or even dozens of color indications such as crimson, dark green, dark blue, dark orange, dark yellow, dark cyan, deep purple, light red, light green, light blue, light orange, light yellow, light cyan and light purple
- Optical service life is not less than 50000 hours
- According to the intelligent instructions of customer customization requirements, different colors are used to represent different States

SUPPORTING SOFTWARE

- The factory comes standard with ELCO IoT Hub platform and ELCO Internet of Things platform connection protocol, supporting third-party protocol expansion and application development
- Support platform to set data reporting method: active reporting
- Support remote FOTA upgrade
- Support operation, alarm, equipment, data and other log generation and export according to the selected time
- Support software to customize the setting of status indication rules

COMMUNICATION MODE

- 4G, WiFi communication mode
- With network diagnosis function, it supports disconnected reconnection and continuous transmission
- Standard BLE communication mode

SAFETY CERTIFICATION

- Have CE test certification of product performance

EIOT-LS SERIES

POWER PARAMETER

POWER SUPPLY DC 24 V

INTERFACE PARAMETER

DIGITAL 4-channel input Max DC24V

ANALOG 1 channel input 0~24mA

WIRELESS PARAMETER

WIRELESS 4G, WiFi(option), BLE(option)

MECHANICAL PARAMETER

PRODUCT SIZE \varnothing 60*230 mm

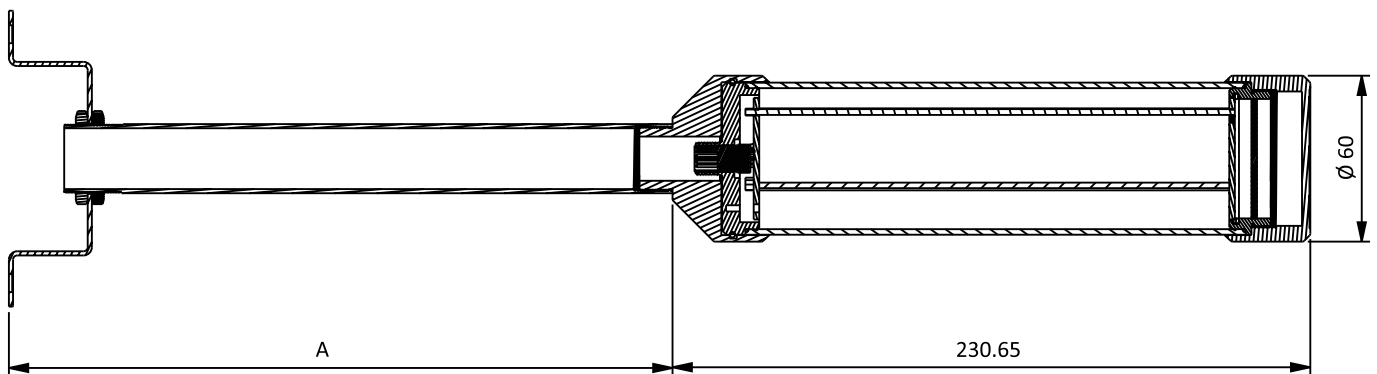
INSTALLATION Vertical, Horizontal

ENVIRONMENTAL CONDITIONS

WORKING TEMPERATURE -30 ... +70 °C

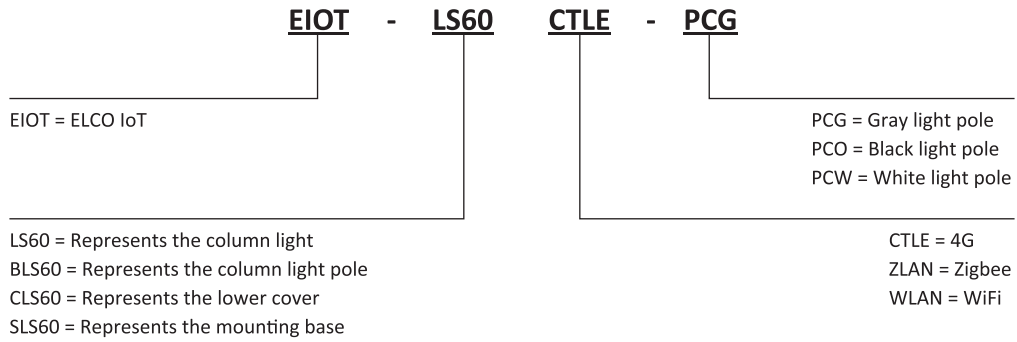
STORAGE TEMPERATURE -35 ... +85 °C

DIMENSIONS



EIOT-LS SERIES

ORDER CODE



EIOT-LS SERIES

SALES AND SERVICE

Tianjin Elco Automation Co., Ltd

No. 12, 4th XEDA Branch Road
Xiqing Economic-Technological Development Area
Tianjin 300385, P.R. China
Office Phone: 022 23788282
E-Mail: info@elco.cn
www.elco-holding.com.cn

Elco Industrie Automation GmbH

Benzstrasse 7
71720 Oberstenfeld,
Deutschland
Office Phone: +49 7062 / 6599-260
E-Mail: info@elco-automation.de
www.elco-automation.de

Elco Automation LLC

1097 Highway 101 South, Suite D-3 Greer
South Carolina 29651, USA
Office Phone: +1 864-581-7431
E-Mail: infousa@elcoautomation.com
www.elcoautomation.com

Elco Industrial Automation Pvt Ltd.

No 80, 1st Main, 2nd Cross, Royal Enclave,
Sidedahalli, Nagasandra Bangalore 560073, India
Office Phone: +91-7259931777
E-Mail: info@elcoautomation.in
www.elcoautomation.com

Elco Automation Korea Ltd.

706, 17 Daehak 4-ro, Yeongtong-gu, Suwon-si,
Gyeonggi-do, Republic of Korea, 16226
Office Phone: +82-31-216-7890
E-Mail: sales@elcoautomation.co.kr
www.elcoautomation.com