

EAC58-EAND

ARTICLE PROPERTIES

TYPE	4 ... 20 mA analog output absolute singleturn encoder
SIZE	∅ 58

TECHNICAL DATA

SHAFT DIAMETER	∅ 6 / ∅ 10g6 mm	STARTING TORQUE	< 0.01 N·m
SPEED	6000 rpm	BODY MATERIAL	Aluminum
BEARING LIFE	10 ⁹ revolution	HOUSING MATERIAL	Aluminum
MOMENT OF INERTIA	1.8 x 10 ⁻⁶ kgm ²	WEIGHT	360 g

Resolution: 8192. For other resolution requests please contact us for further information.

ENVIRONMENTAL CONDITIONS

PROTECTION CLASS	IP65	OPERATING TEMPERATURE	-20 ... +80 °C
MAX LOAD CAPACITY OF THE SHAFT	60 N axial, 120 N radial	STORAGE TEMPERATURE	-25 ... +85 °C
SHOCK RESISTANCE (EN 60068-2-27)	50 g, 11 ms	RELATIVE HUMIDITY / CONDENSATION	90%, condensation not permitted
VIBRATION RESISTANCE (EN 60068-2-6)	10 g, 10 ... 2000 Hz		

ELECTRICAL PARAMETERS

TYPE OF INTERFACE	4 ... 20 mA	MAX. INPUT RESISTANCE	200 Ω
SUPPLY VOLTAGE (UB)	10 ... 30 V DC, 5 V DC	MEASURING RANGE	0 ... 360°
CURRENT CONSUMPTION	70 mA	MAX. SENSITIVITY (25 °C)	0.2°
MAX. LOADING CURRENT	84 mA	RESOLUTION	13 Bit
WORD-UPDATING FREQUENCY	Max. 15.000/s	SETUP TIME	Max. 2 ms
CURRENT LOOP	10 ... 30 V DC	TEMPERATURE EFFECT	0.1°/10 K
ANALOG SIGNAL	4 ... 20 mA	NO-LOAD CURRENT	≤ 3.5 mA

Sensor should be electrically isolated form current loop

STANDARDS AND DIRECTIVES

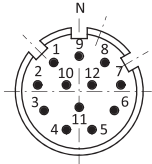
LOW-VOLTAGE SWITCHGEAR AND CONTROLGEAR	EN IEC 61000-6-2 EN IEC 61000-6-4
-----------------------------------------------	--------------------------------------

APPROVALS



EAC58-EAND

TERMINAL ASSIGNMENT



M23 12pin layout (Male)

Current signal	0V	+Ub	-	-	I+	I-	STZ	VR	STT	-	-	-	⊥
Color	WH	BN	GN	YE	GY	PK	BU	RD	BK	VT	GY/PK	RD/BU	
12Pin	1	2	3	4	5	6	7	8	9	10	11	12	PH

0V / +UB	Can be powered together or separately
I+	Input of current loop
I-	Output of current loop
STZ	SET input (signal level remains high for 2 sec), the output current is set to 4 mA
VR	Up/down input, as the input is activated, decreasing current values are transmitted when shaft turning clockwise
STT INPUT	SET input (signal level remains high for 2 sec), the output current is set to 20 mA
PH	Plug housing

Attention:
 1, Before initial start-up, unused outputs must be insulated.
 2, Shaft remains static, and at the same time set STZ & STT signal at high level; singleturn resumes to 4-20mA, and the present position output is at 4 mA.

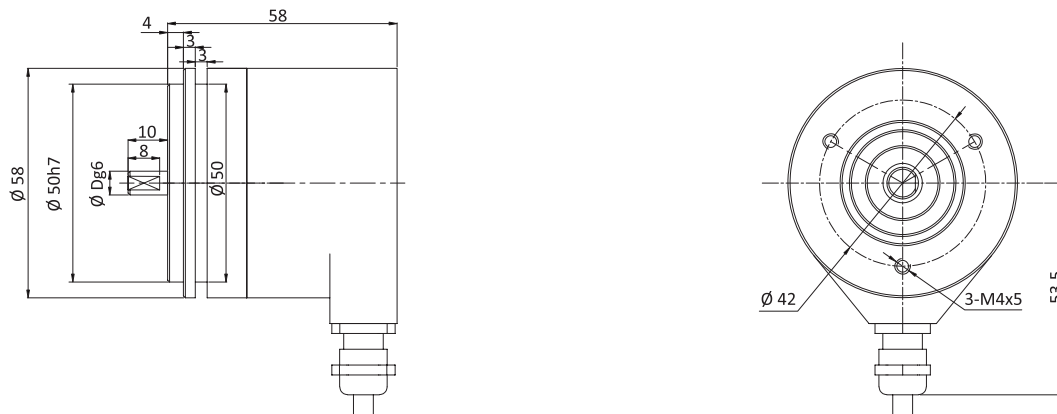
WIRING PRINCIPLE

1. The encoder operates using a 2-wire system. The power supply (DC) and signal output (4 ... 20 mA current) share the same wiring.
2. Connect the power terminals according to their functional definitions. Additionally, the positive power terminal (+V) can be connected in parallel to the encoder's "I+" terminal.
3. Connect the encoder's "I-" terminal to the "I+" terminal of the receiving device (e.g., PLC analog input module, display instrument, etc.).
4. The "I-" terminal of the receiving device is connected to the 0V (COM / GND) of the power supply, forming a circuit.

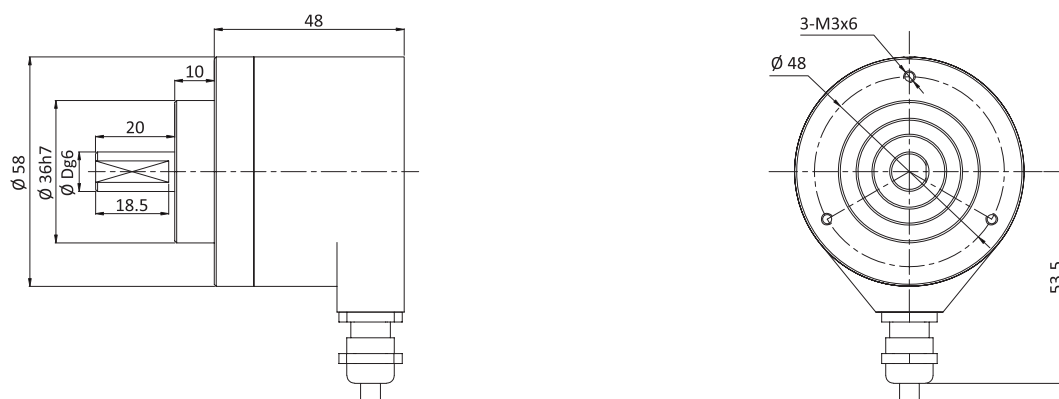
EAC58-EAND

DIMENSIONS (mm)

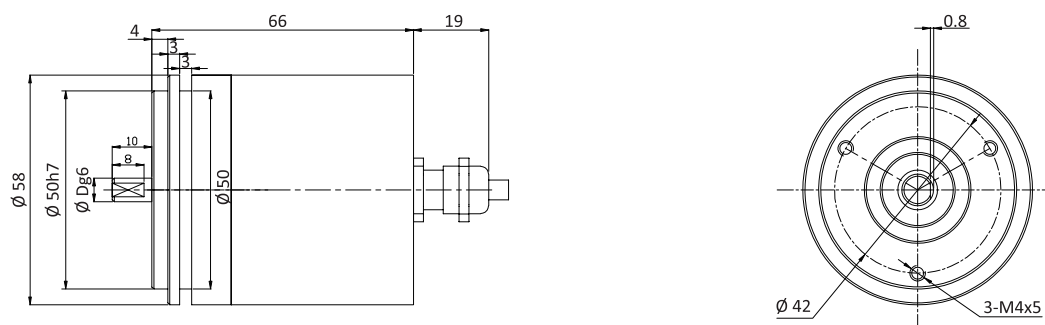
EAC58B Radial



EAC58C Radial



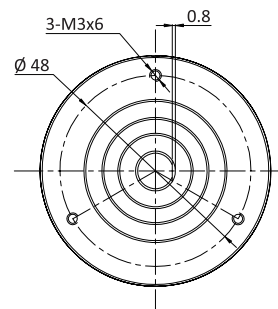
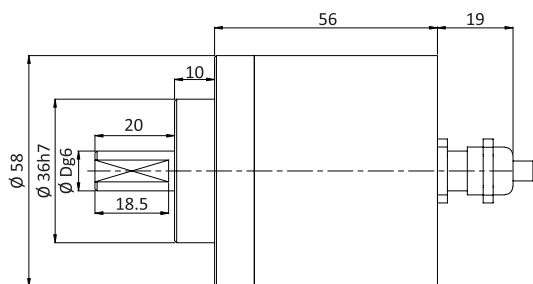
EAC58B Axial



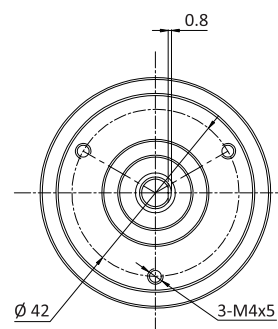
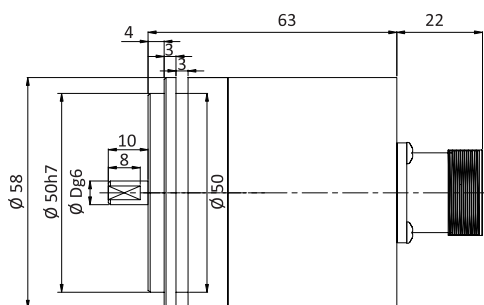
EAC58-EAND

DIMENSIONS (mm)

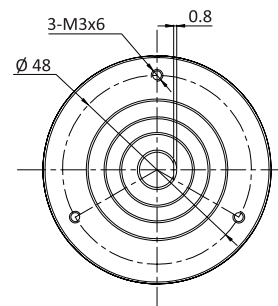
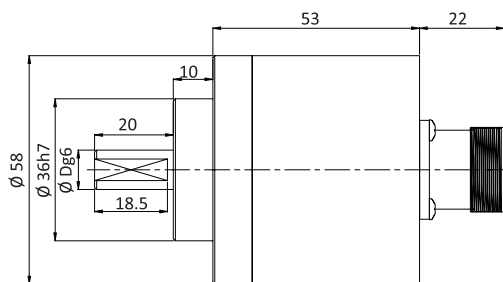
EAC58C Axial



EAC58B M23 Axial



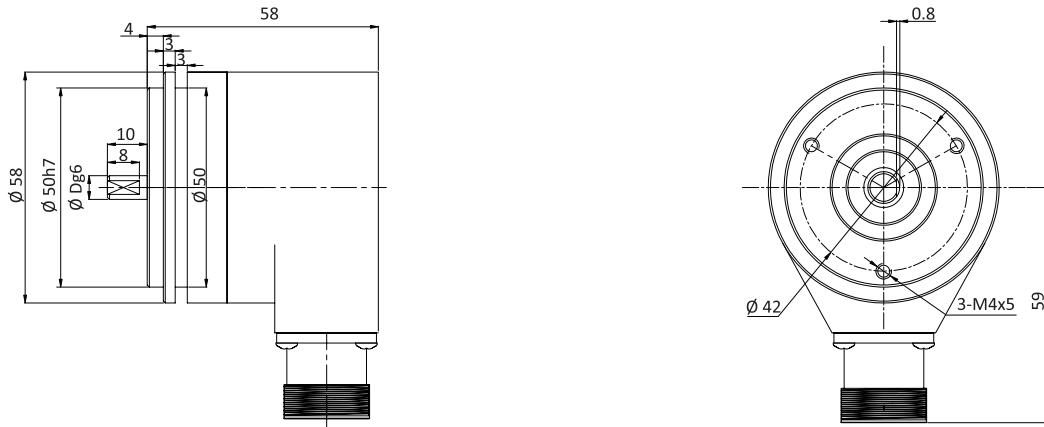
EAC58C M23 Axial



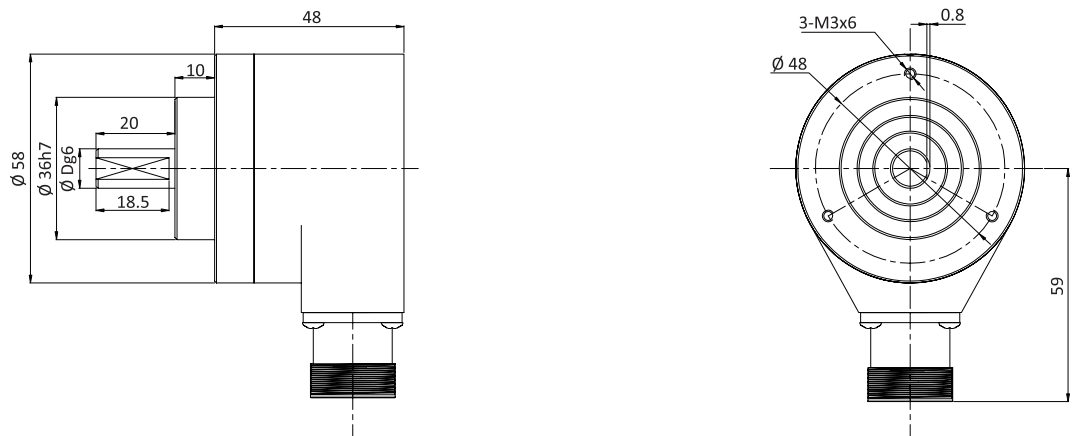
EAC58-EAND

DIMENSIONS (mm)

EAC58B M23 Radial

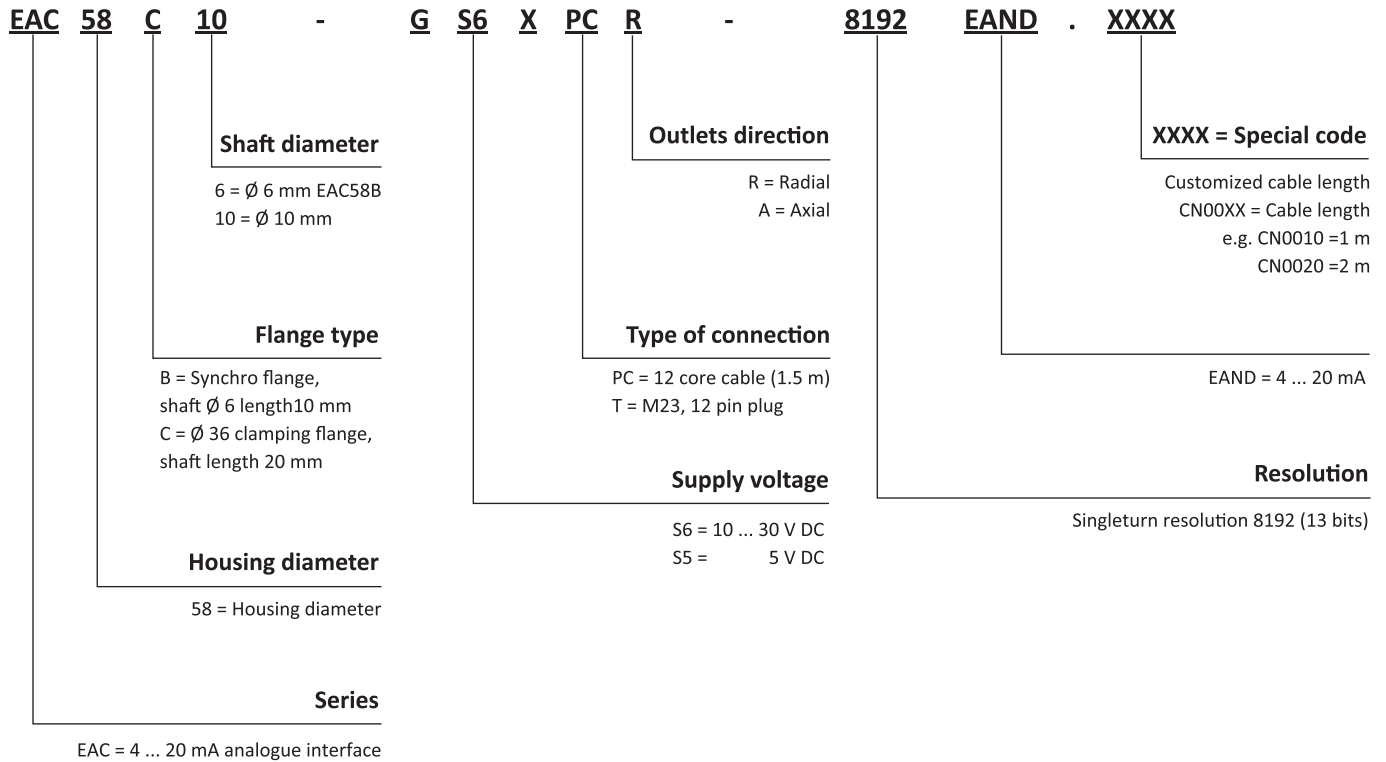


EAC58C M23 Radial



EAC58-EAND

ORDER CODE



EAC58-EAND

SALES AND SERVICE

Tianjin Elco Automation Co., Ltd

No. 12, 4th XEDA Branch Road
Xiqing Economic-Technological Development Area
Tianjin 300385, P.R. China
Office Phone: 022 23788282
E-Mail: info@elco.cn
www.elcoautomation.com.cn

Elco Industrie Automation GmbH

Häldenfeld 8
71723 Großbottwar
Germany
Office Phone: +49 7062 / 6599-260
E-Mail: info@elco-automation.de
www.elco-automation.de

Elco Automation LLC

1097 Highway 101 South, Suite D-3 Greer
South Carolina 29651, USA
Office Phone: +1 864-581-7431
E-Mail: infousa@elcoautomation.com
www.elcoautomation.com

Elco Industrial Automation Pvt Ltd.

No 80, 1st Main, 2nd Cross, Royal Enclave,
Sidedahalli, Nagasandra Bangalore 560073, India
Office Phone: +91-7259931777
E-Mail: info@elcoautomation.in
www.elcoautomation.com

Elco Automation Korea Ltd.

706, 17 Daehak 4-ro, Yeongtong-gu, Suwon-si,
Gyeonggi-do, Republic of Korea, 16226
Office Phone: +82-31-216-7890
E-Mail: sales@elcoautomation.co.kr
www.elcoautomation.com